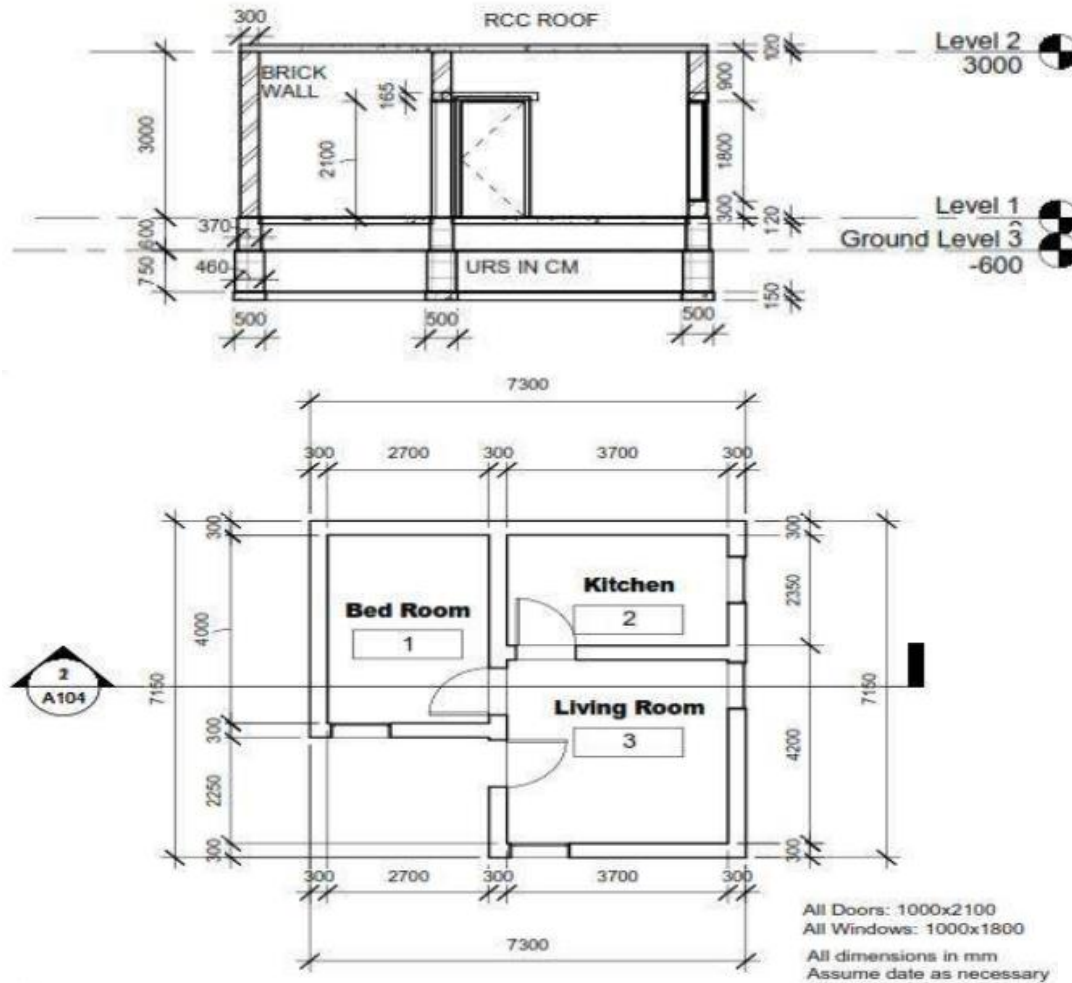


Q1. Calculate quantity of following items of work (refer to the below figure):

(i) Excavation for wall foundation (ii) Brick works

Note: Make suitable assumptions where necessary.



Q2. Enumerate the stages of projects

Q3. Write major benefits of BOQ

Q4. Write types of estimation

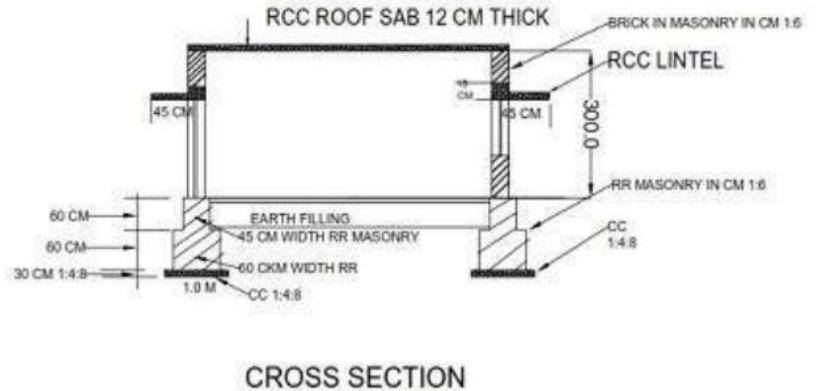
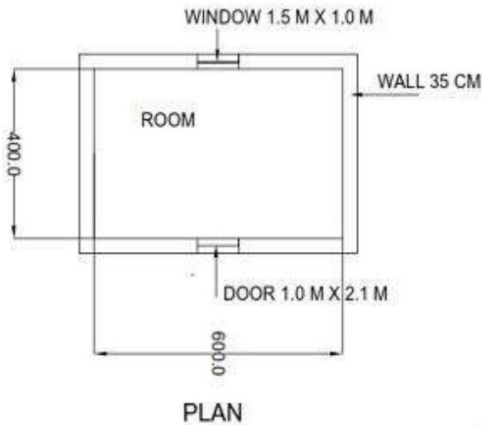
Q5. Read the following statements and put the True for correct one and False for wrong one. Correct the wrong statement

1. The parties involved in estimating and tendering are the client's staff, the construction contractor's personnel and external organizations.
2. The cost information required by the estimator are labor, plant, materials and subcontractor.
3. Overheads based costs are site staff, site accommodation and clearing site.
4. Bill of Quantity is one of the communication tool which connects the parties (Client, consultant & contractor) of construction project.
5. BOQ is in tabular form which contents description, unit, quantity, rate & amount in different columns.

6. The quantity surveyor makes cost feasibility studies, establishes construction budget, and makes cost checks at all.

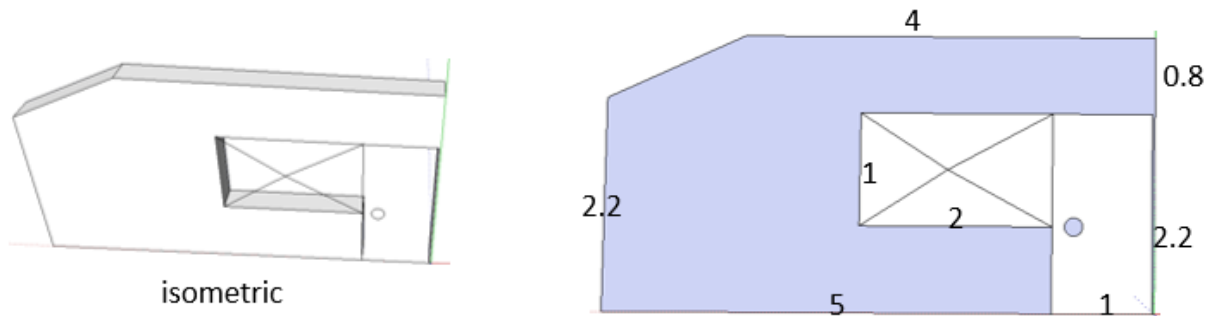
Q6. Prepare detailed estimate for the single room building shown in the sketch plan and section in figure and exclude the roof slab.

Note: Make suitable assumptions where necessary



Q7. Find amount of block required in (m^2 and m^3) to build the following wall, if the thickness of wall is; 20cm, 40cm, or 12cm.

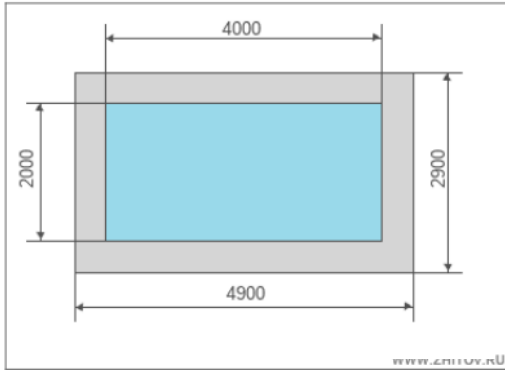
Note: Make suitable assumptions where necessary.



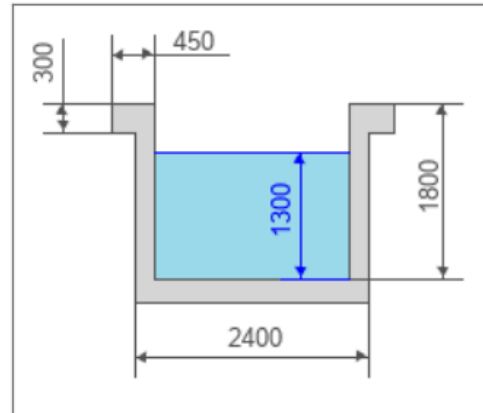
Q8. Determine the quantities for gravel, sand and cement for the given mix proportion 1:2:4 to construct 3 cubic meters wall. (Note: Make suitable assumptions where necessary.)

Q9. find the amount of concrete for the given in ground swimming pool and determine the amount of gravel, cement, and sand if the mix proportion of the concrete is 1:2:4.

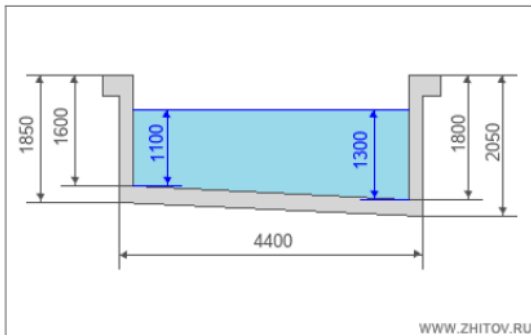
Note: Make suitable assumptions where necessary.



Basin dimensions - Top view



Basin dimensions - front view



Basin dimensions - side view

Q10. Write the estimating process by chart

Q11. What are the factors that are decision tender depend on

Q12. Enumerate the costs that included in overhead part.

Q14. What are the points that should be considered in estimator report?