

Tishk International University
Engineering Faculty
Interior Design Department



LECTURE 4: ARTICULATION OF FORM

1ST STAGE

SPRING SEMESTER

INSTRUCTOR: JENAN SABAH ALI

M.SC. ARCHITECTURAL DESIGN

jenan.sabah@tiu.edu.iq

07503864986

Lecture content

Lecture 1: Primary Elements

Lecture 2: Form

Lecture 3: Transformation of Form

Lecture 4: Articulation of form

Lecture 5: Organization & Circulation

Lecture 6: Organization & Circulation

Lecture 7: Proportion & Scale Principles

Articulation of form

Articulation refers to the manner in which the surfaces of a form come together to define its shape and volume. An articulated form clearly reveals the precise nature of its parts and their relationships to each other and to the whole.

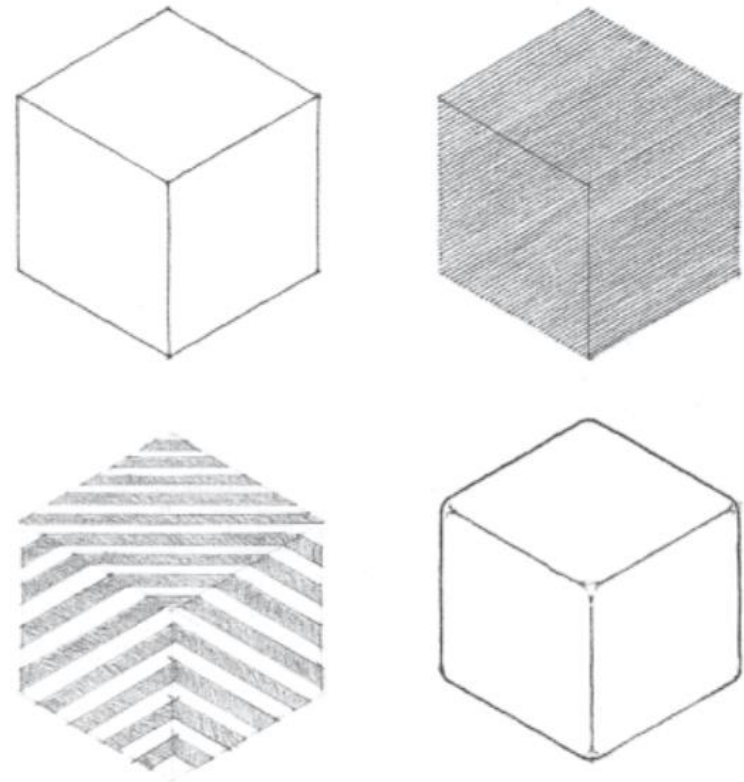
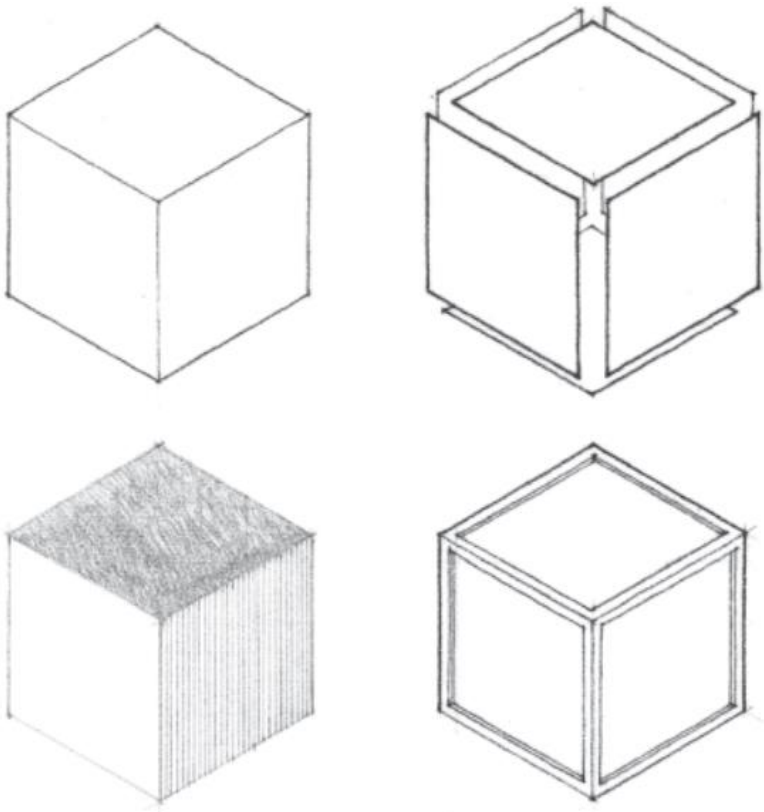
The treatment of edges, corners, surface articulation of windows (horizontal, vertical, static field), and the visual weight of a building all contribute to the articulation of the form.

Articulation of form

A form can be articulated by:

- Differentiating adjoining planes with a change in material, color, texture, or pattern.
- Developing corners as distinct linear elements independent of the abutting planes.
- Removing corners to physically separate neighboring elements.
- Lighting the form to create sharp contrasts in tonal value along edges and corners.

Articulation of form



Articulation of form



Articulation of form

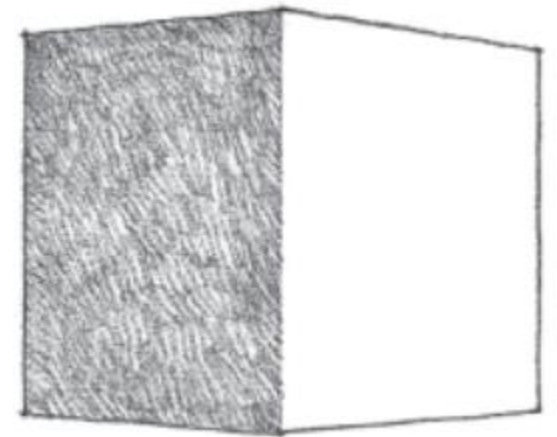
In opposition to the emphasis on joints and joinery, the corners of a form can be rounded and smoothed over to emphasize the continuity of its surface. Or a material, color, texture, or pattern can be carried across a corner onto the adjoining surfaces to de-emphasize the individuality of the surface planes and emphasize instead the volume of a form.

Articulation of form

Edges and corners

Since the articulation of a form depends to a great degree on how its surfaces meet each other at corners, how these edge conditions are resolved is critical to the definition and clarity of a form.

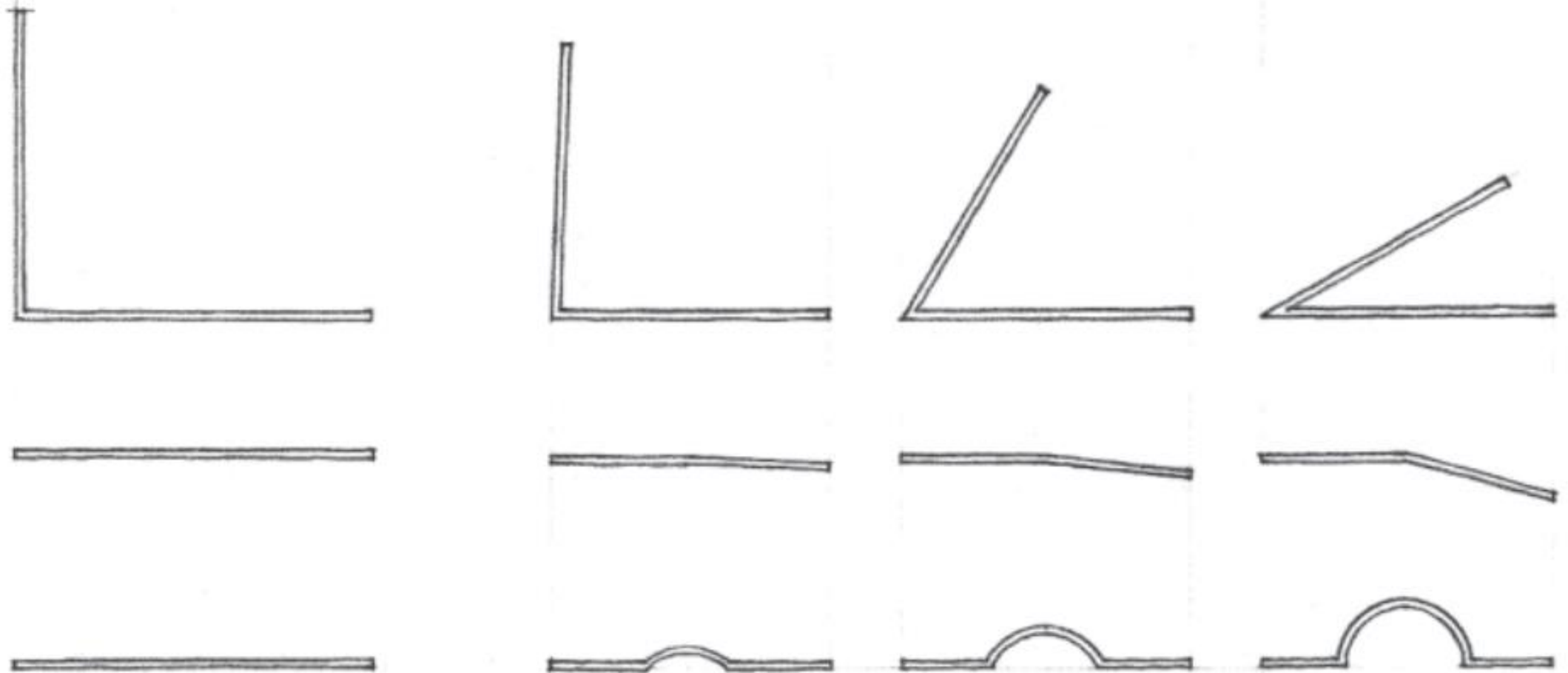
While a corner can be articulated by simply contrasting the surface qualities of the adjoining planes or obscured by layering their joining with an optical pattern, our perception of its existence is also affected by the laws of perspective and the quality of light that illuminates the form.



Articulation of form

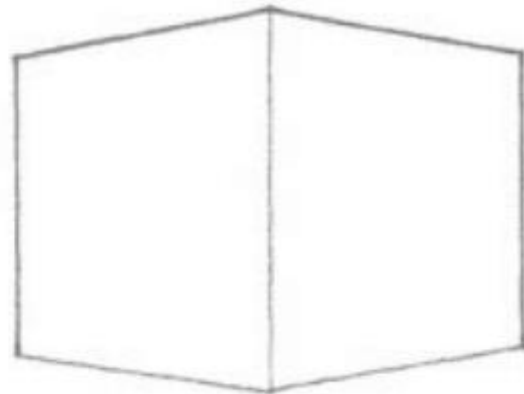
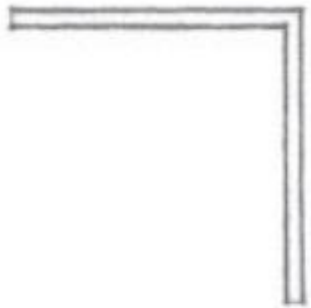
For a corner to be formally active, there must be more than a slight deviation in the angle between the adjoining planes. Since we constantly search for regularity and continuity within our field of vision, we tend to regularize or smooth out slight irregularities in the forms we see. For example, a wall plane that is bent only slightly will appear to be a single flat plane, perhaps with a surface imperfection. A corner would not be perceived.

Articulation of form



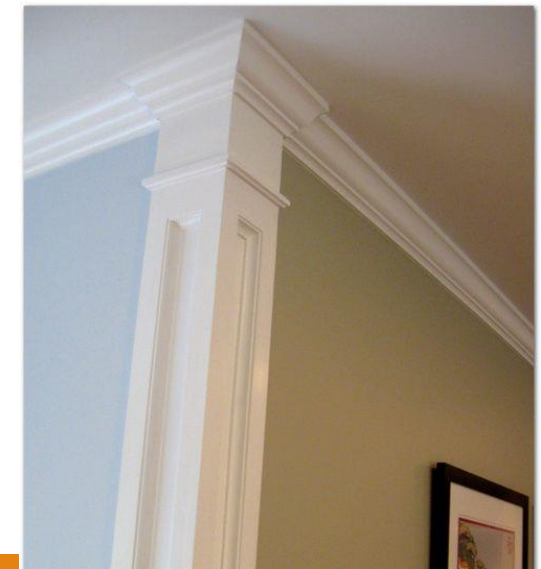
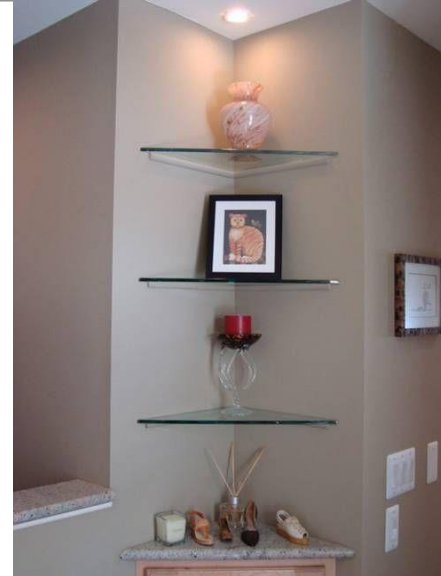
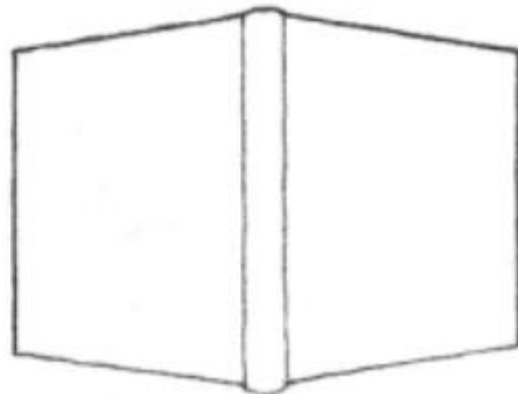
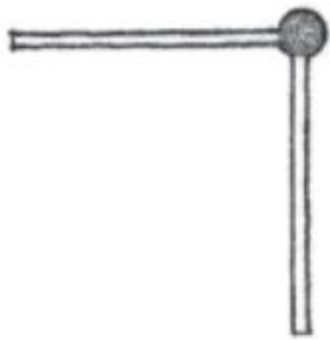
Corner articulation

1. Corners define the meeting of two planes. If the two planes simply touch and the corner remains unadorned, the presence of the corner will depend on the visual treatment of the adjoining surfaces. This corner condition emphasizes the volume of a form.



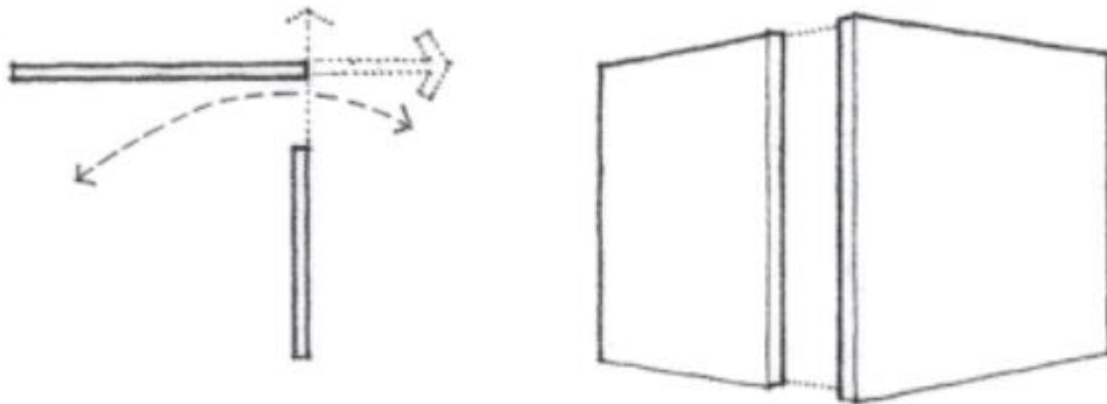
Corner articulation

2. A corner condition can be visually reinforced by introducing a separate and distinct element that is independent of the surfaces it joins. This element articulates the corner as a linear condition, defines the edges of the adjoining planes, and becomes a positive feature of the form.



Corner articulation

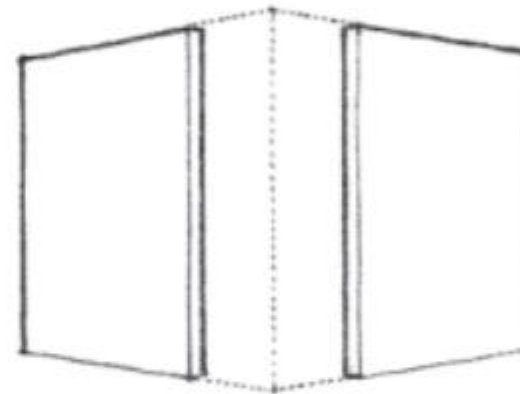
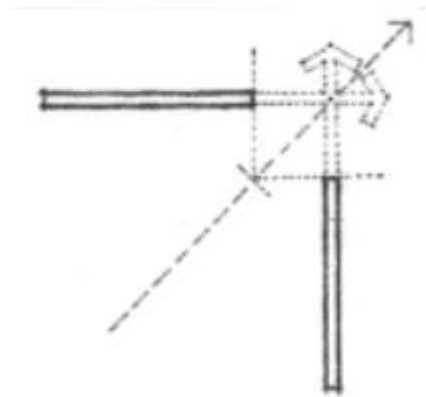
3. If an opening is introduced to one side of the corner, one of the planes will appear to bypass the other. The opening diminishes the corner condition, weakens the definition of the volume within the form, and emphasizes the planar qualities of the neighboring surfaces.





Corner articulation

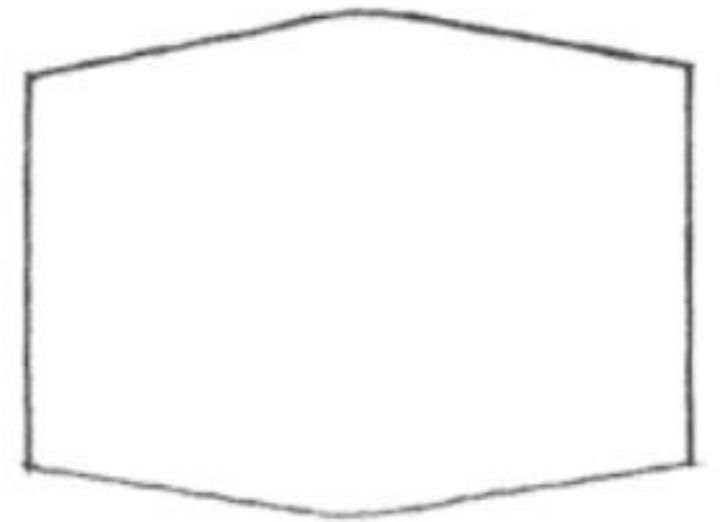
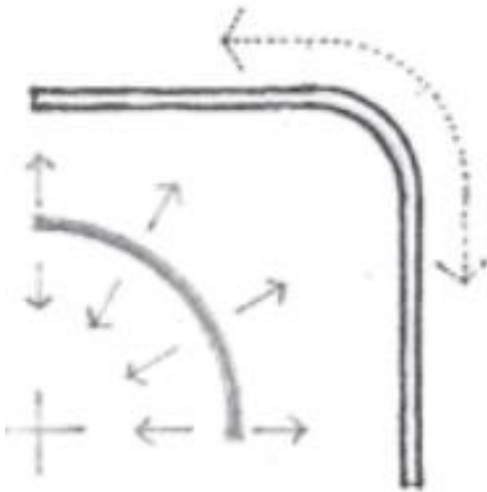
4. If neither plane is extended to define the corner, a volume of space is created to replace the corner. This corner condition deteriorates the volume of the form, allows the interior space to leak outward, and clearly reveals the surfaces as planes in space





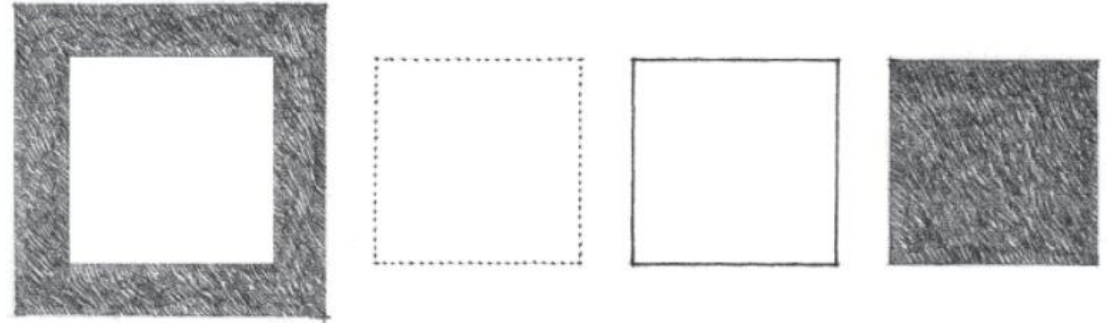
Corner articulation

5. Rounding off the corner emphasizes the continuity of the bounding surfaces of a form, the compactness of its volume, and the softness of its contour. The scale of the radius of curvature is important. If too small, it becomes visually insignificant; if too large, it affects the interior space it encloses and the exterior form it describes



Surface articulation

Our perceptions of a plane's shape, size, proportion, and visual weight are influenced by its surface properties and visual context.

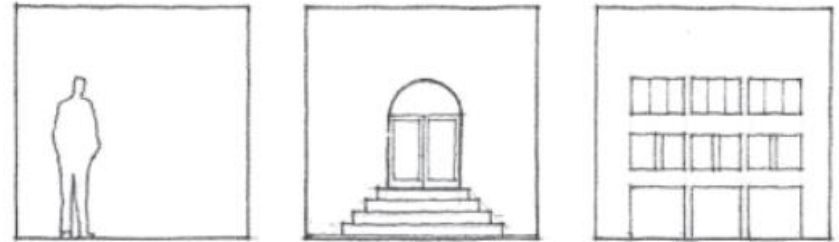


A distinct contrast between the surface color of a plane and that of the surrounding field can clarify its shape, while modifying its tonal value can either increase or decrease its visual weight

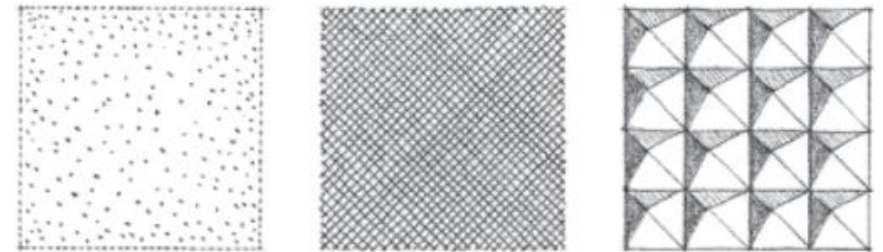


Surface articulation

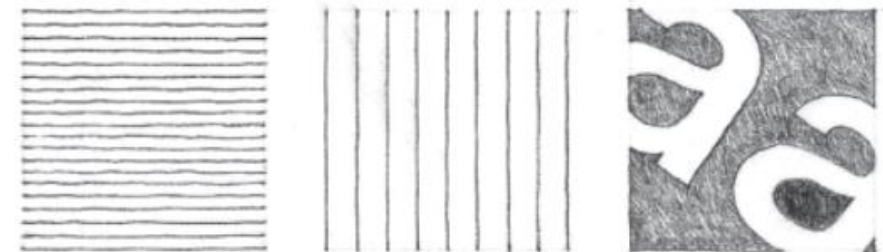
Elements of known size within the visual context of a plane can aid our perception of its size and scale.



Texture and color together affect the weight and scale of a plane and the degree to which it absorbs or reflects light and sound



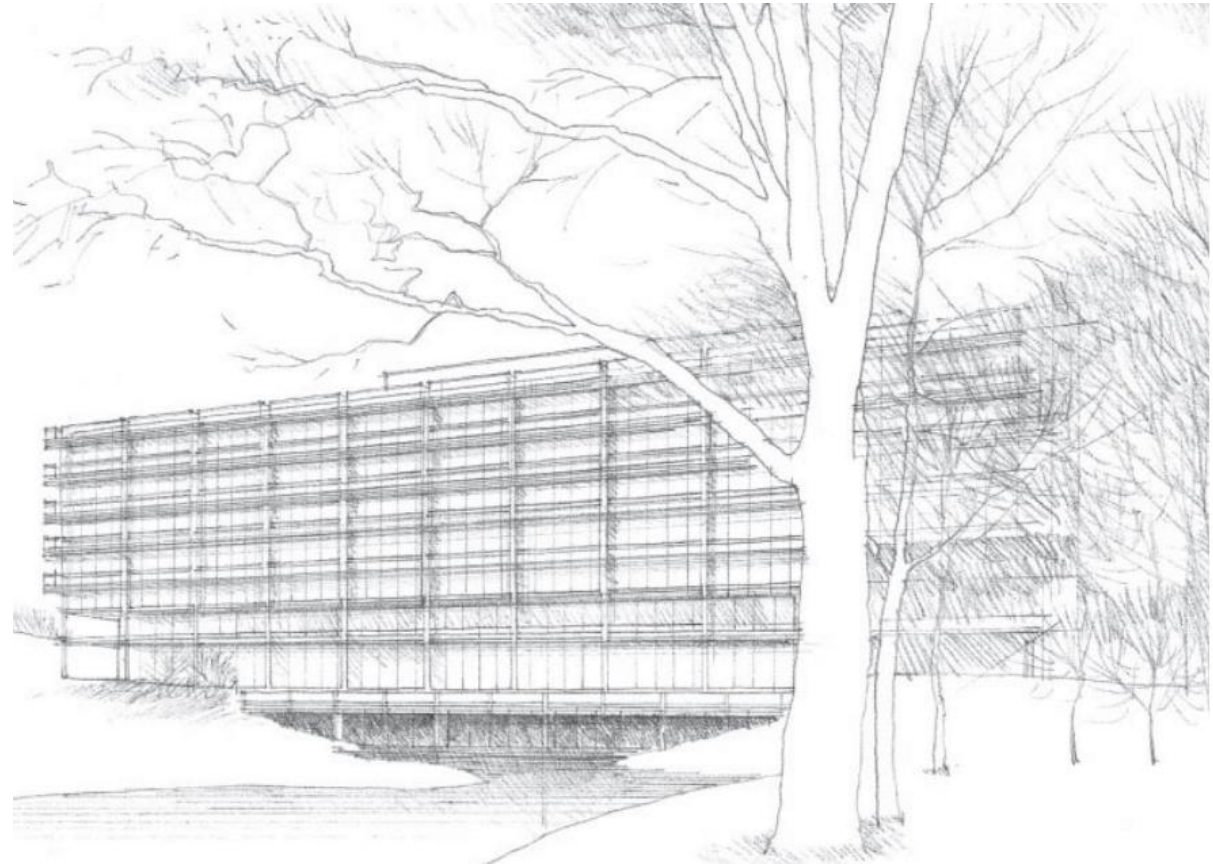
Directional or oversized optical pattern distort the shape or exaggerate the proportions of a plane.

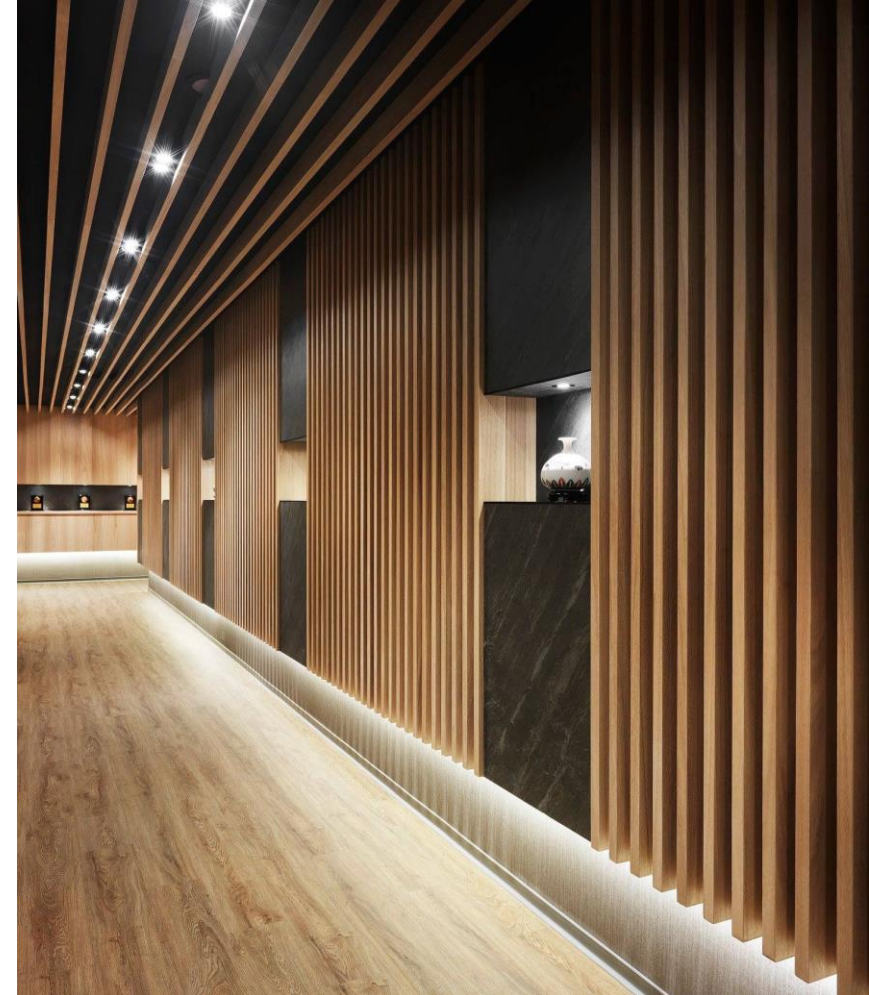


Surface articulation

Linear patterns have the ability to emphasize the height or length of a form, unify its surfaces, and define its textural quality.

The linear sun-shading devices accentuate the horizontality of the building form.

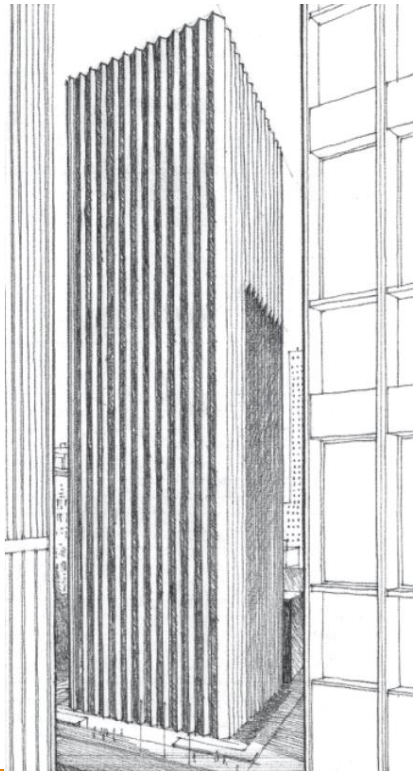




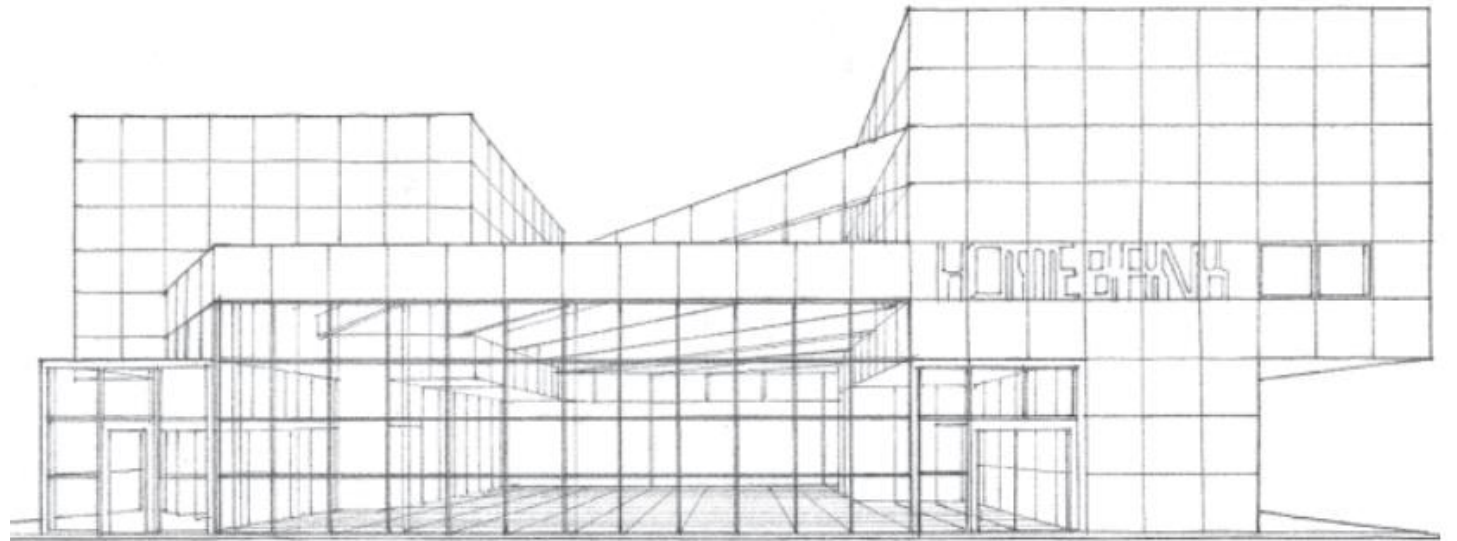
Surface articulation

Surface articulation

Linear columnar elements emphasize the verticality of this high-rise structure.



A grid pattern unifies the surfaces of the three-dimensional composition.

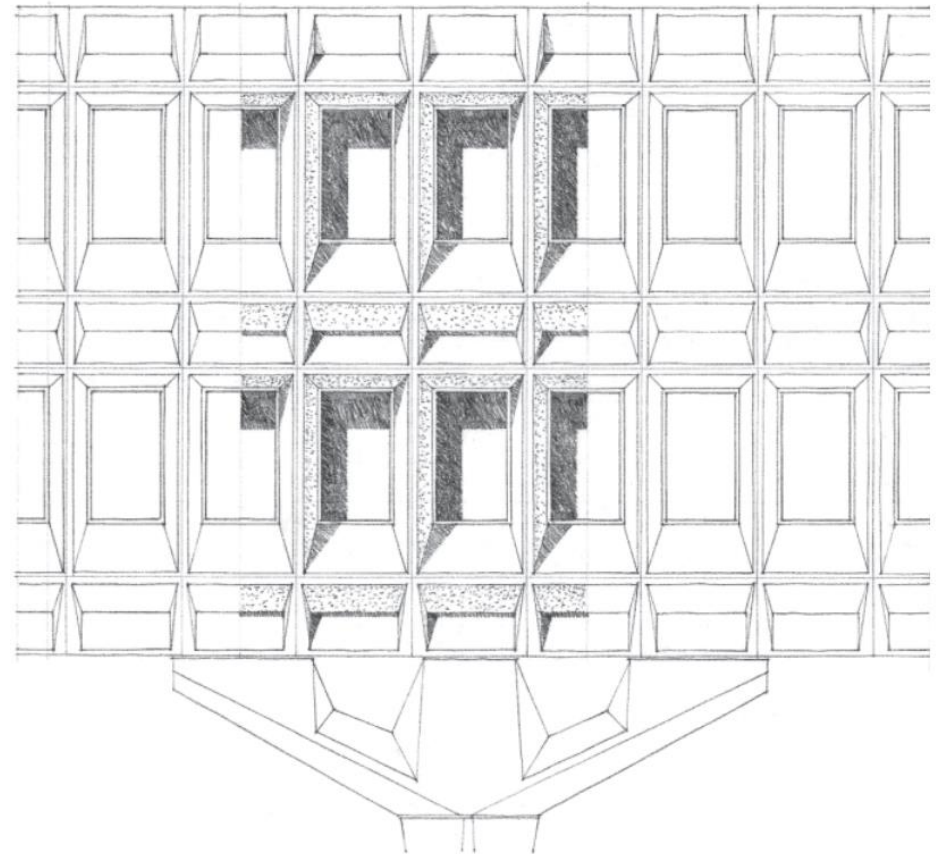




Surface articulation

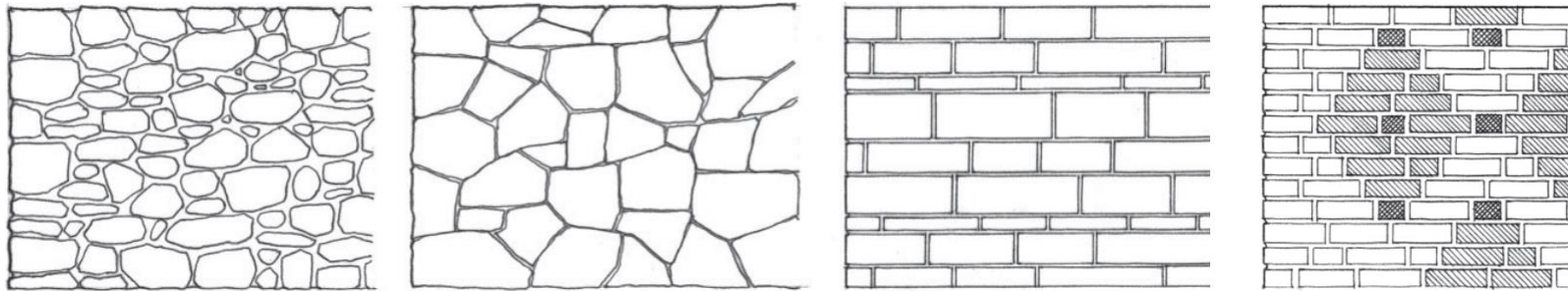
Surface articulation

The three-dimensional form of the openings creates a texture of light, shade, and shadows.



Surface articulation

At a smaller scale, the surfaces of buildings owe their visual characteristics to the way their materials are joined and assembled in construction.



Reference

Ching, Frank, (1943). Architecture form, space and order

THANK YOU

