

REFERENCE ANALYSIS

REFERENCE ANALYSIS

1 - URBAN INTEGRATION

- 1.1 - MASS/VOID
- 1.2 - ALIGNMENT LINES
- 1.3 - ORIENTATION
- 1.4 - BUILDING HEIGHTS
- 1.5 - PUBLIC SPACE
- 1.6 - EXTERNAL CIRCULATION / ACCESS TO BUILDING

2 - PROGRAM & ROUTING

- 2.1 - ORGANISATION OF THE PROGRAM
- 2.2 - PUBLIC VS PRIVATE
- 2.3 - INTERNAL CIRCULATION/ROUTING

3 - FACADE

- 3.1 FACADE MATERIAL & COMPOSITION



KUNSTHAUS BREGENZ

SOURCE : NZZ REISEN

REFERENCE | KUNSTHAUS BREGENZ

LOCATION: BREGENZ, AUSTRIA

ARCHITECT: PETER ZIEMTHOR

BUILT: 1990-1997





RELATION OF THE BUILDING MASS WITH THE DIRECT SURROUNDING?

ACCESSIBILITY OF THE BUILDING?

URBAN INTEGRATION

- 1.1 - MASS/VOID
- 1.2 - ALIGNMENT LINES
- 1.3 - ORIENTATION
- 1.4 - BUILDING HEIGHTS
- 1.5 - PUBLIC SPACE
- 1.6 - EXTERNAL CIRCULATION / ACCESS TO BUILDING

1.1 MASS/VOID



1.2 ALIGNMENT LINES



THE BUILDING FOLLOWS THE URBAN
ALIGNMENT LINES

1.3 ORIENTATION



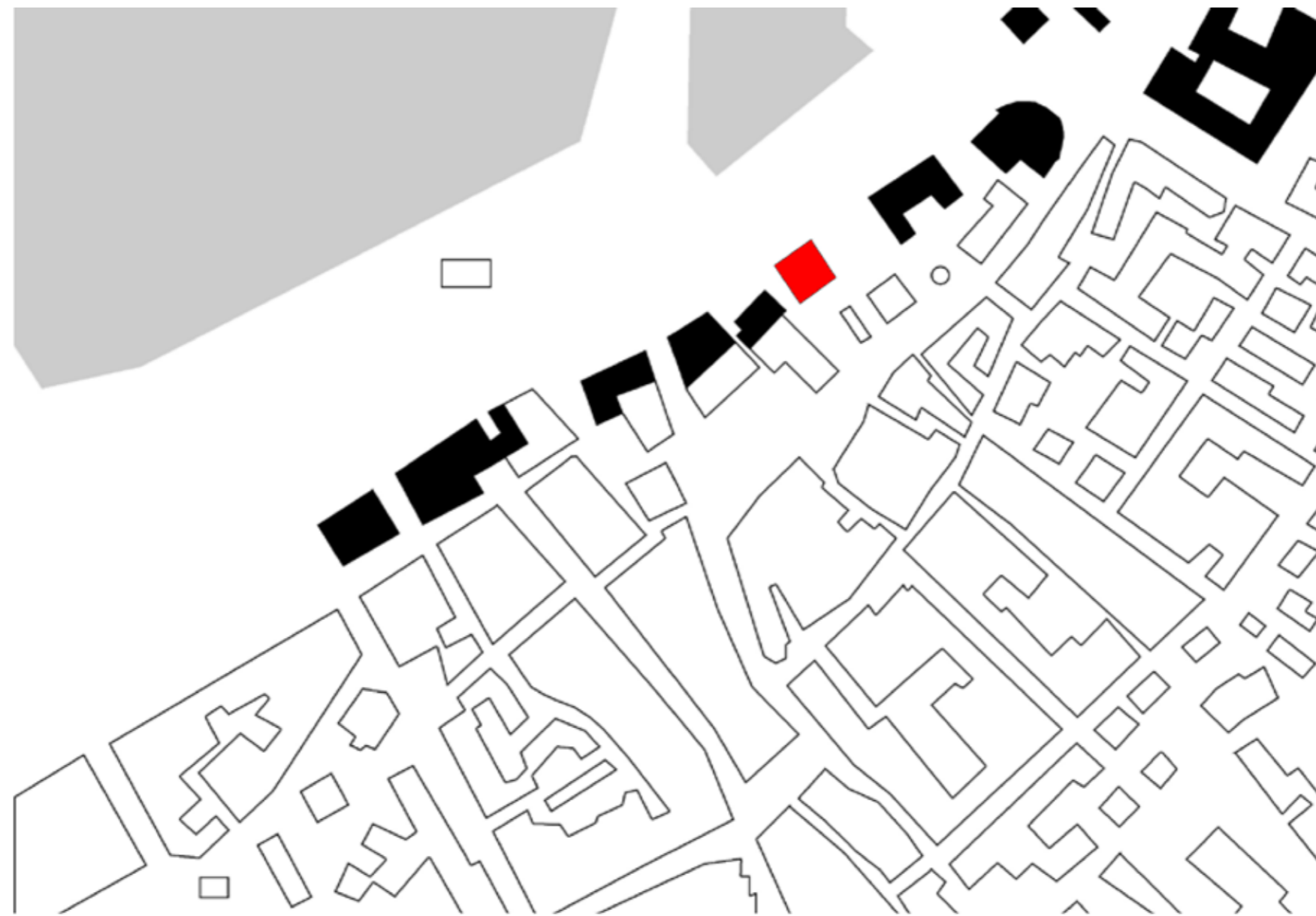
WATERFRONT VS STREET

1.4 BUILDING HEIGHTS



SIMILAR BUILDING HEIGHT

1.4 BUILDING HEIGHTS



INCREASED HEIGHTS AT THE WATERFRONT

1.5 PUBLIC SPACE



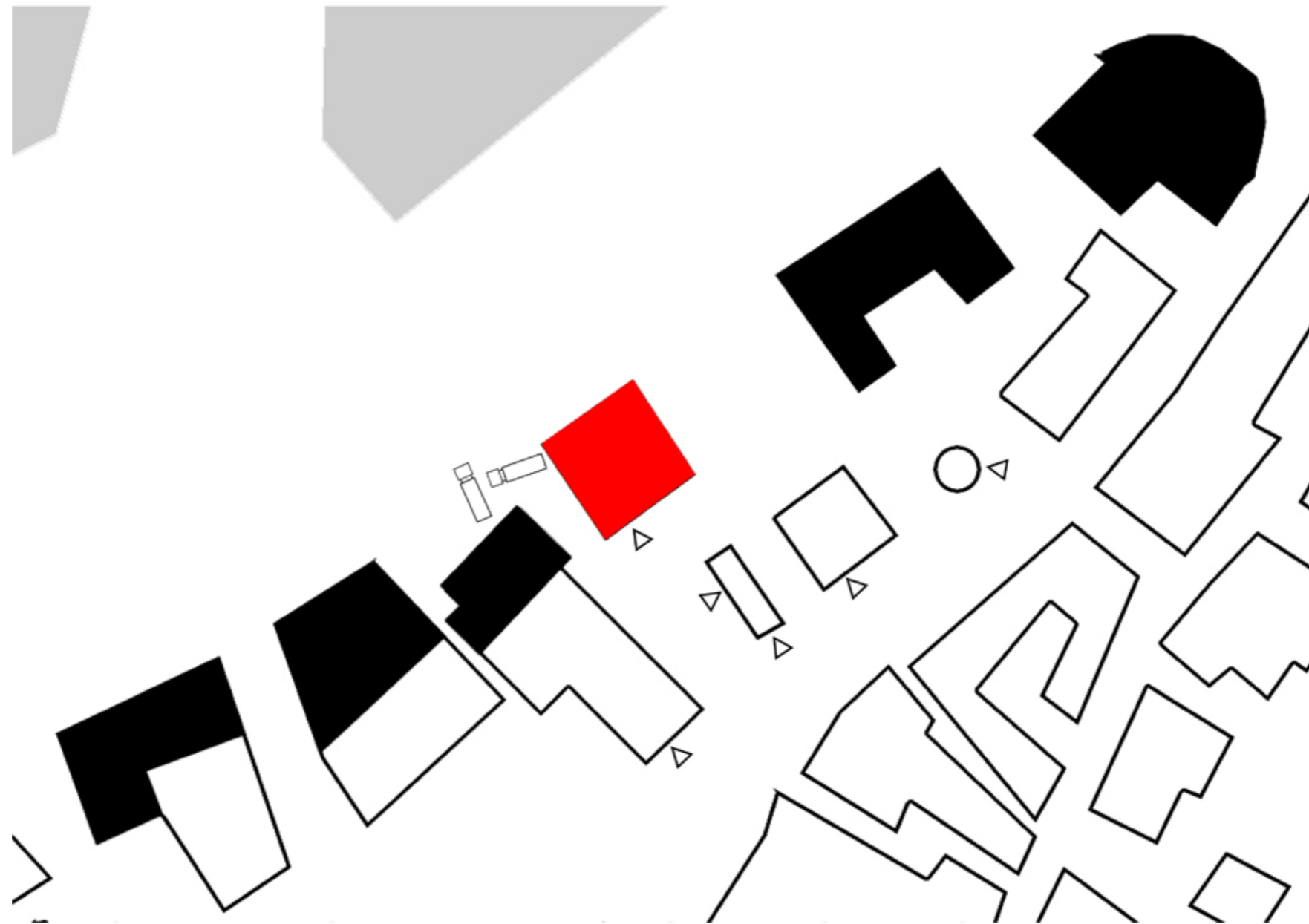
PUBLIC SPACE : REGIONAL VS LOCAL

1.6 EXTERNAL CIRCULATION / ACCESS TO THE BUILDING



PERMEABLE STRUCTURE WATERFRONT VS STREETS
BETWEEN THE BUILDING BLOCKS

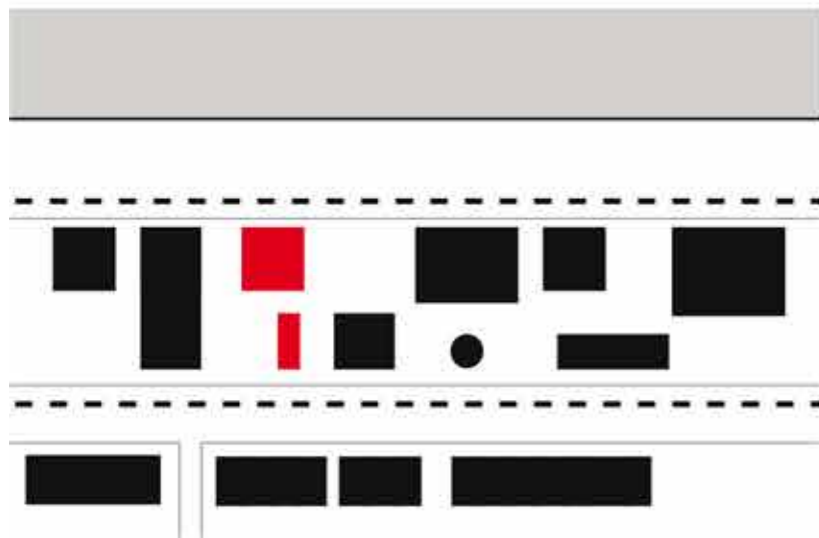
1.6 EXTERNAL CIRCULATION / ACCESS TO THE BUILDING



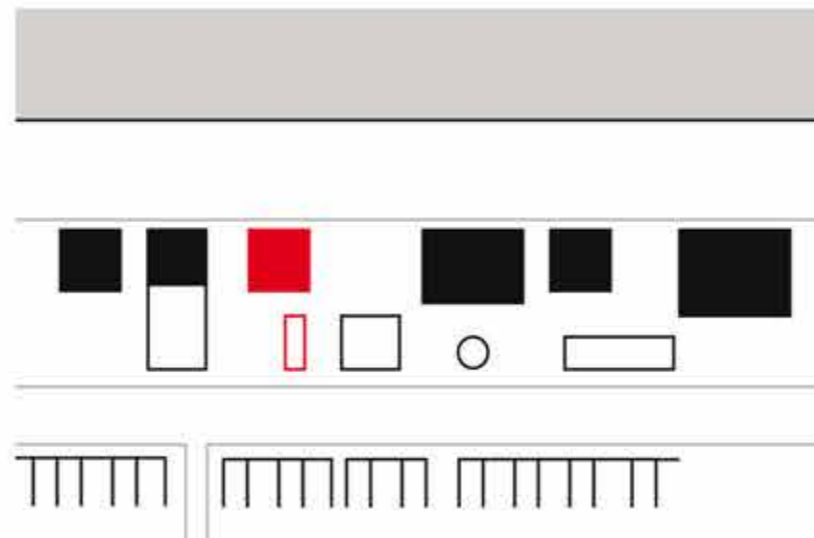
ACCESS FROM LOCAL PUBLIC SPACE

CONCLUSION URBAN INTEGRATION

- 1 - Following the urban alignment lines
- 2 - Similarities in height, mass, acces and fitting into a serie
- 3 - Abstracting style attributes surroundings



1



2



3

- ORGANISATION OF THE PROGRAMS?

- CIRCULATION OF THE PROGRAMS?

PROGRAM & ROUTING

2.1 - ORGANISATION OF THE PROGRAM

2.2 - PUBLIC VS PRIVATE

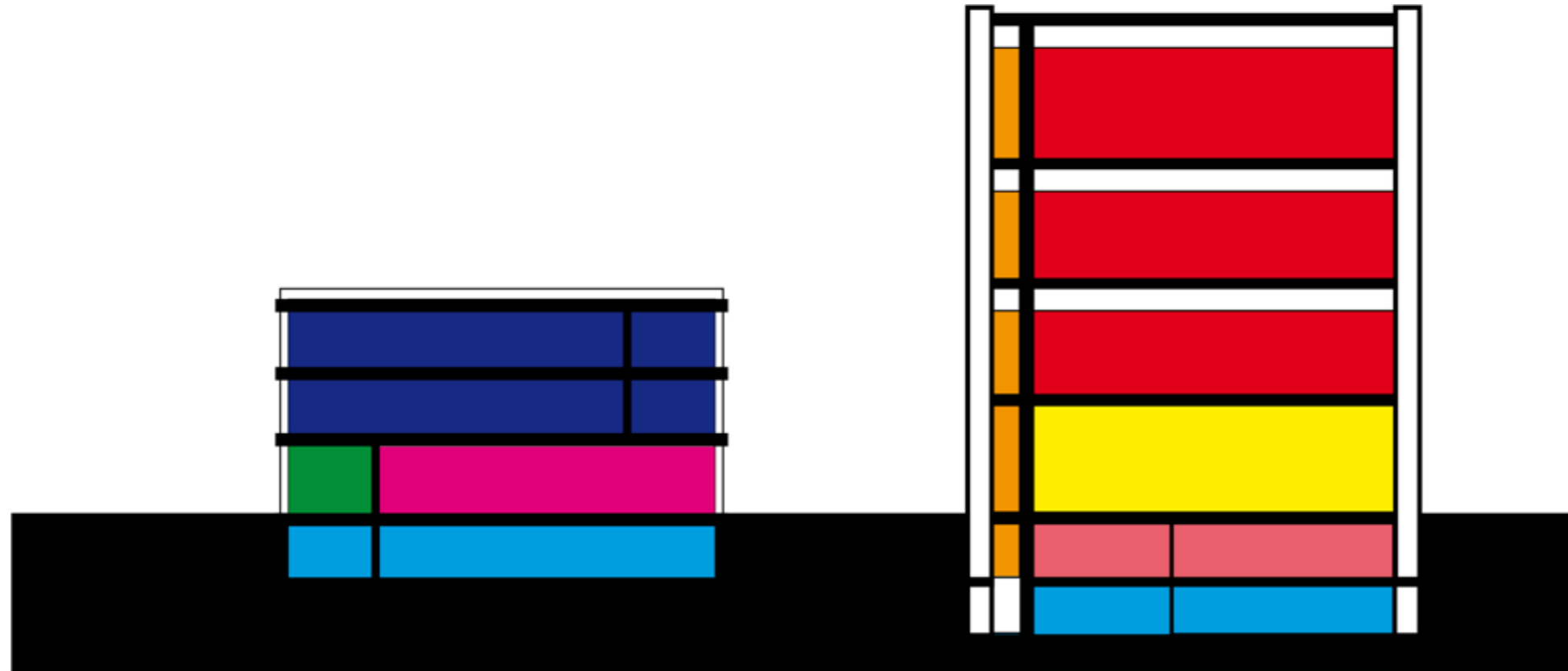
2.3 - INTERNAL CIRCULATION/ROUTING

REFERENCE | PROGRAM & ROUTING

2.1 ORGANISATION



2.1 ORGANISATION

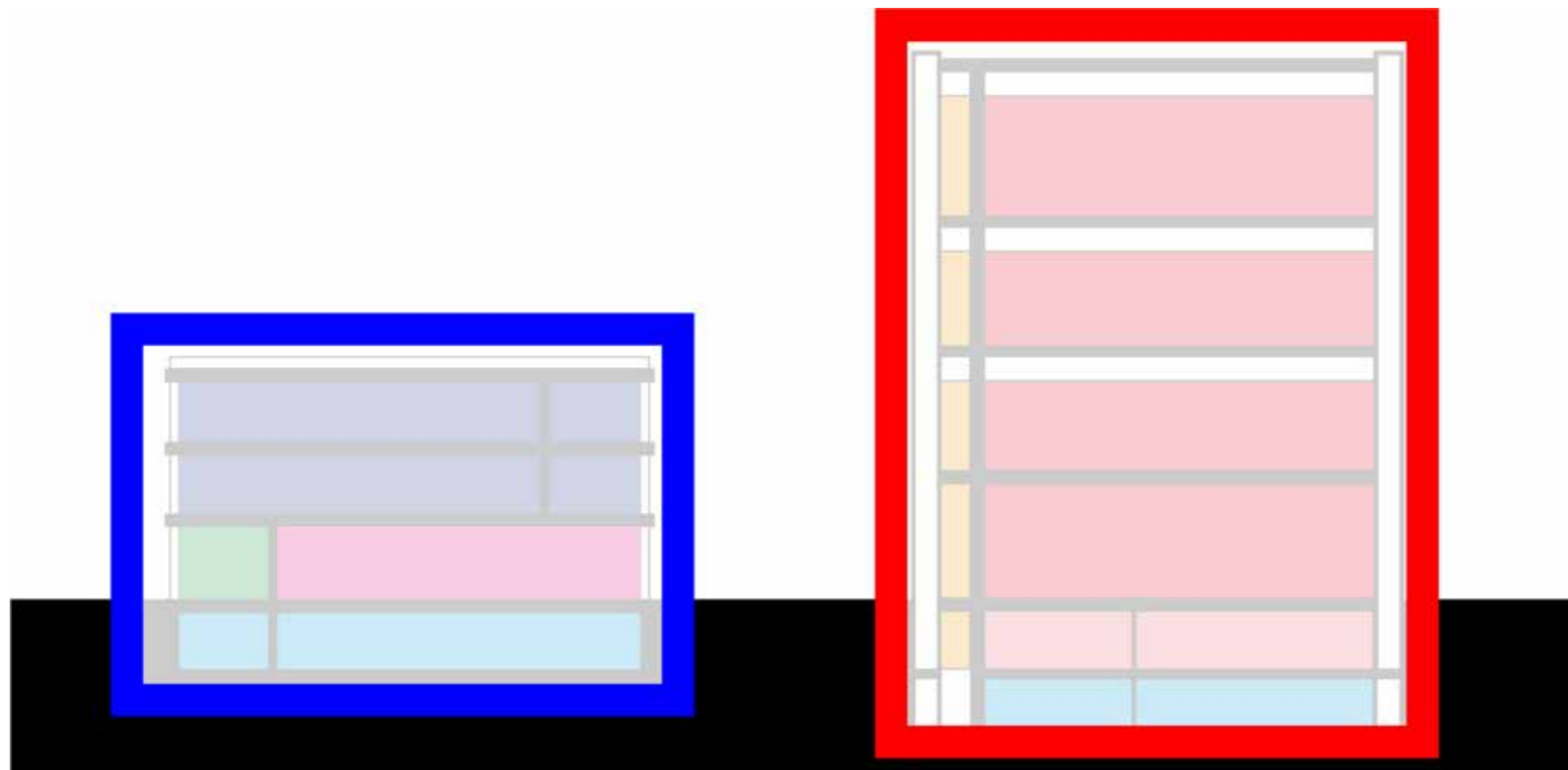


- Events
- Exhibition
- Art education
- Cafe
- Shop
- Office / library
- Facilities
- Circulation area

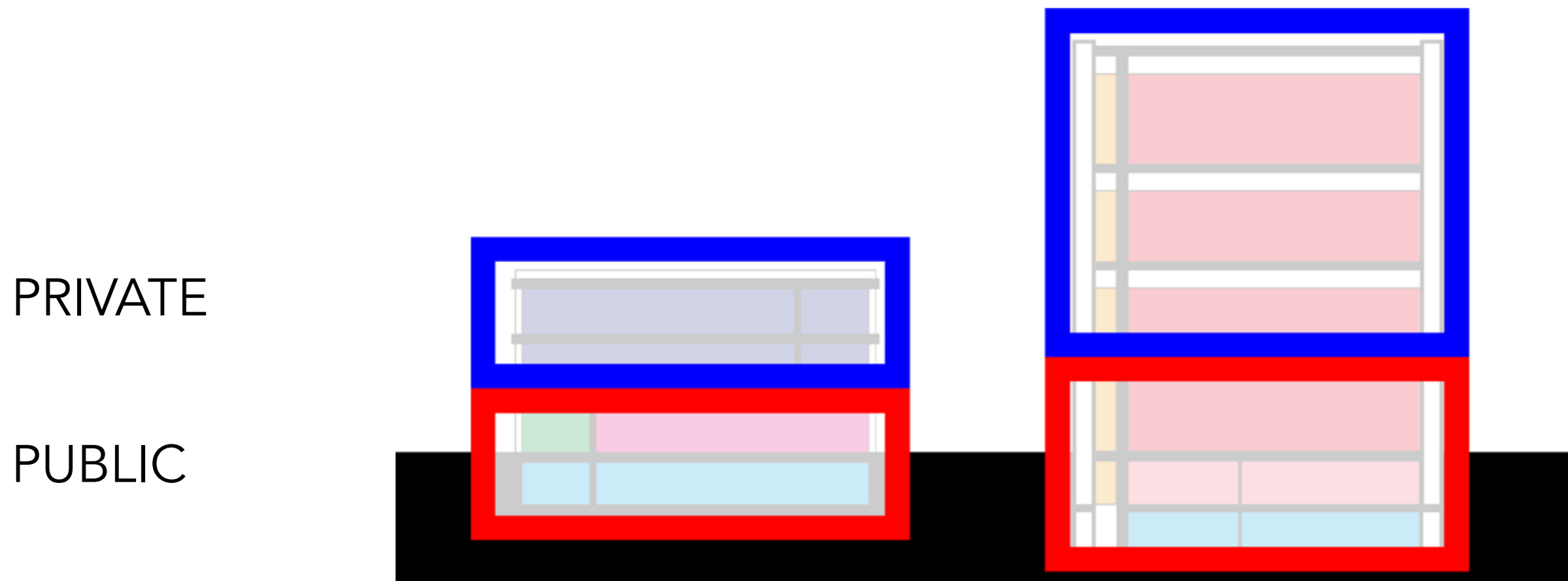
2.1 ORGANISATION

SERVICE

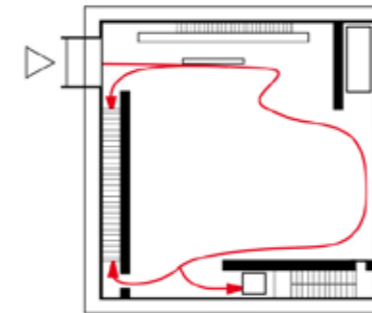
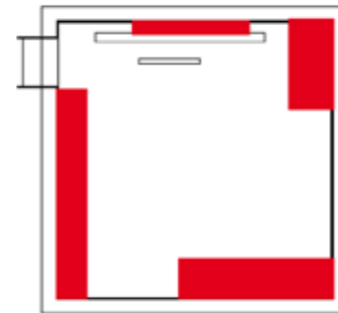
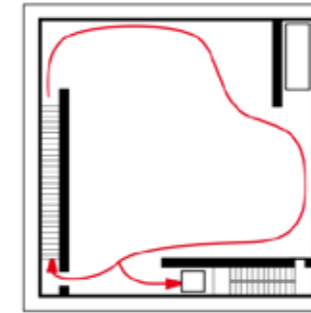
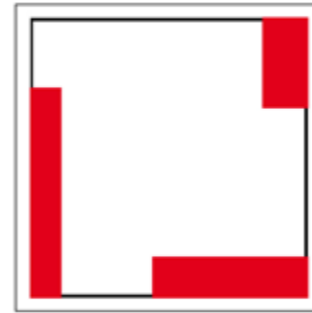
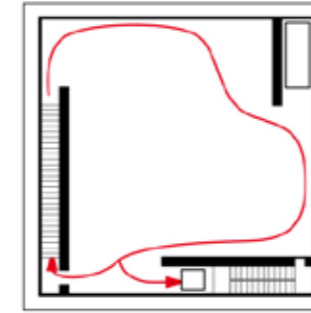
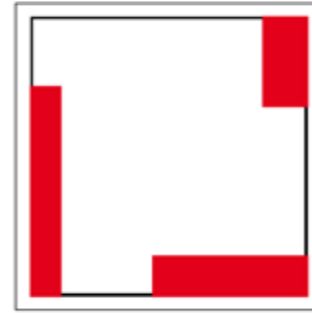
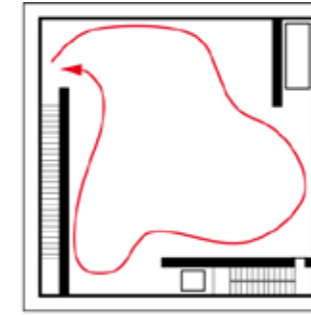
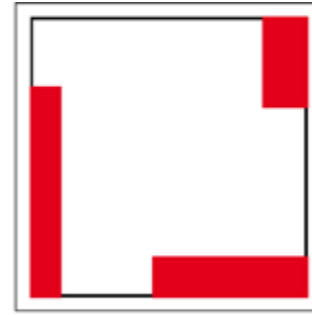
ART



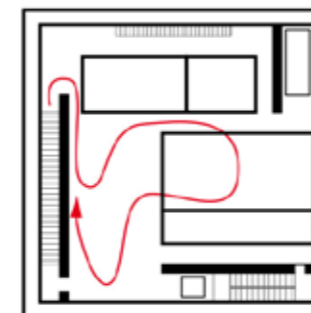
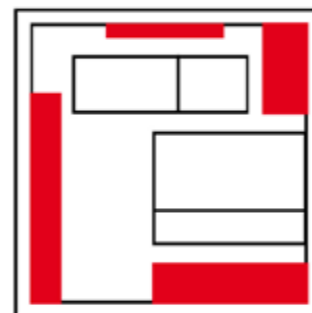
2.2 PUBLIC VS PRIVATE



2.3 INTERNAL CIRCULATION



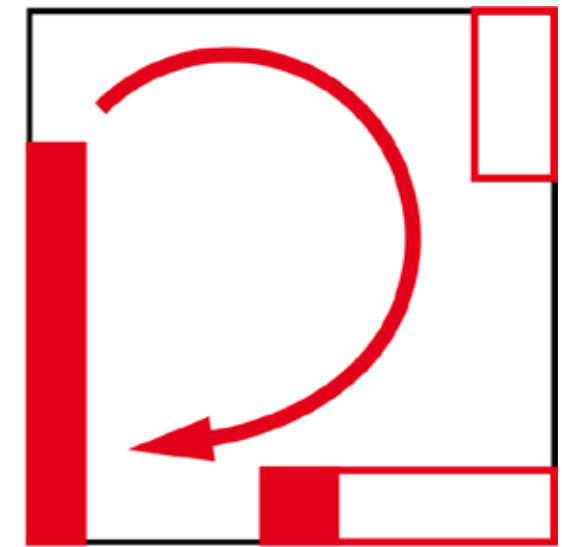
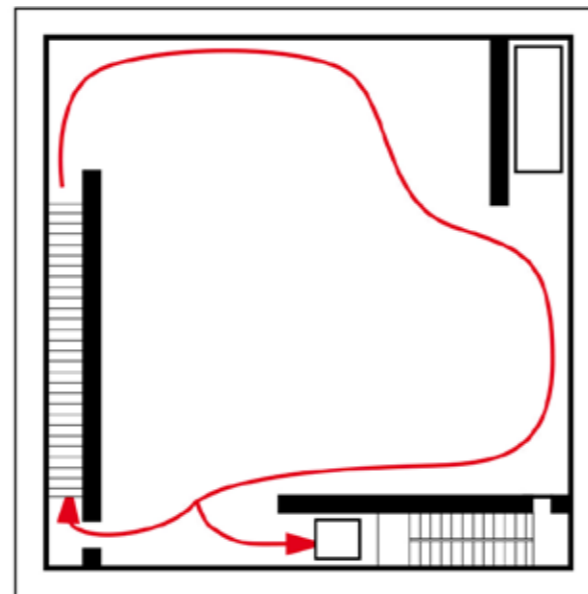
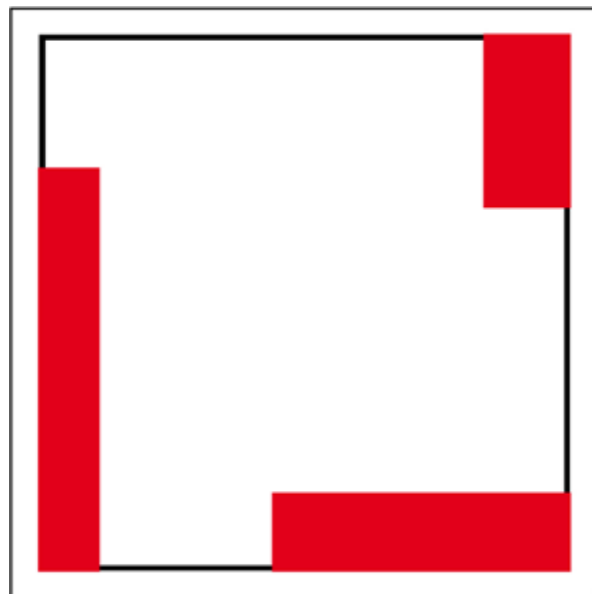
VERTICAL
CIRCULATION



HORIZONTAL
CIRCULATION

2.3 INTERNAL CIRCULATION

PRINCIPAL OF CIRCULATION



- THE FACADE COMPOSITION & MATERIALIZATION IN RELATION TO THE ORGANISATION

FACADE

3.1 FACADE MATERIAL/COMPOSITION

3.1 FACADE MATERIAL & COMPOSITION



DAY



NIGHT

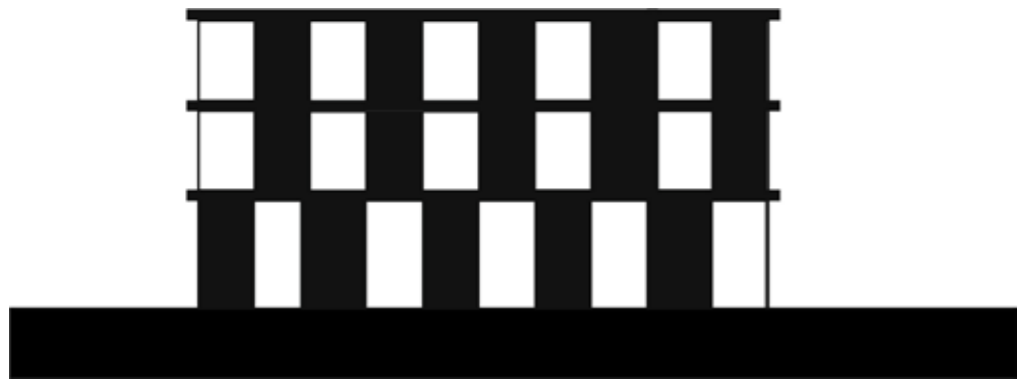
3.1 FACADE MATERIAL & COMPOSITION - CONCEPT



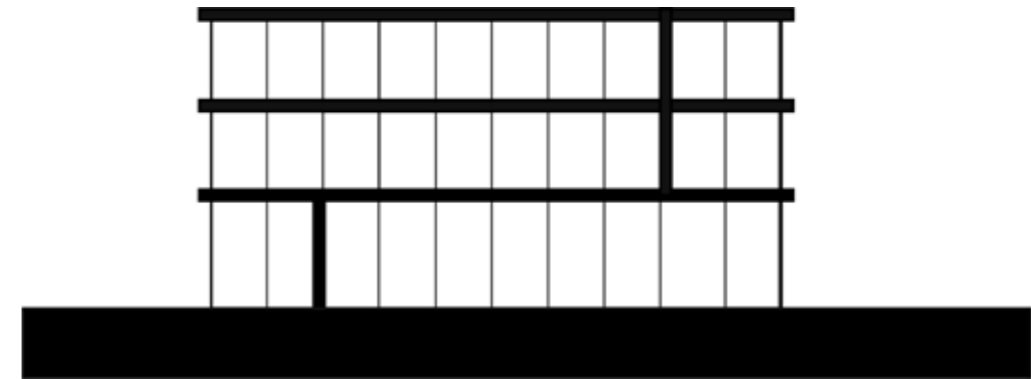
FACADE CONCEPT - TWO FACES



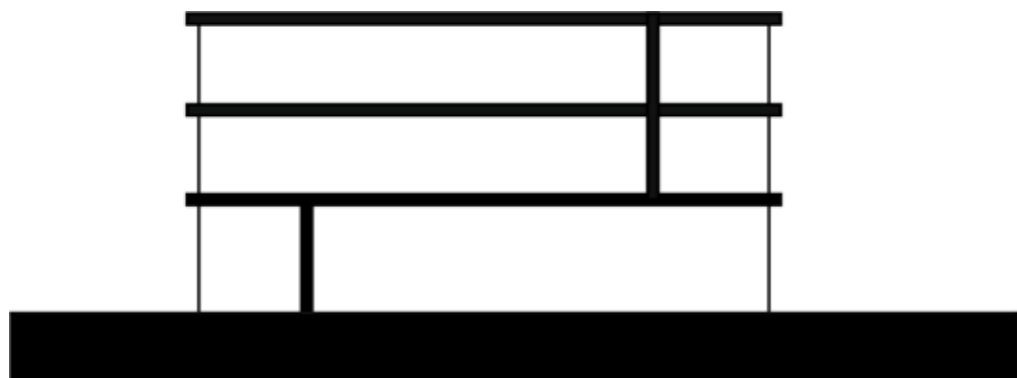
3.1 FACADE MATERIAL & COMPOSITION



materials :
concrete & glass



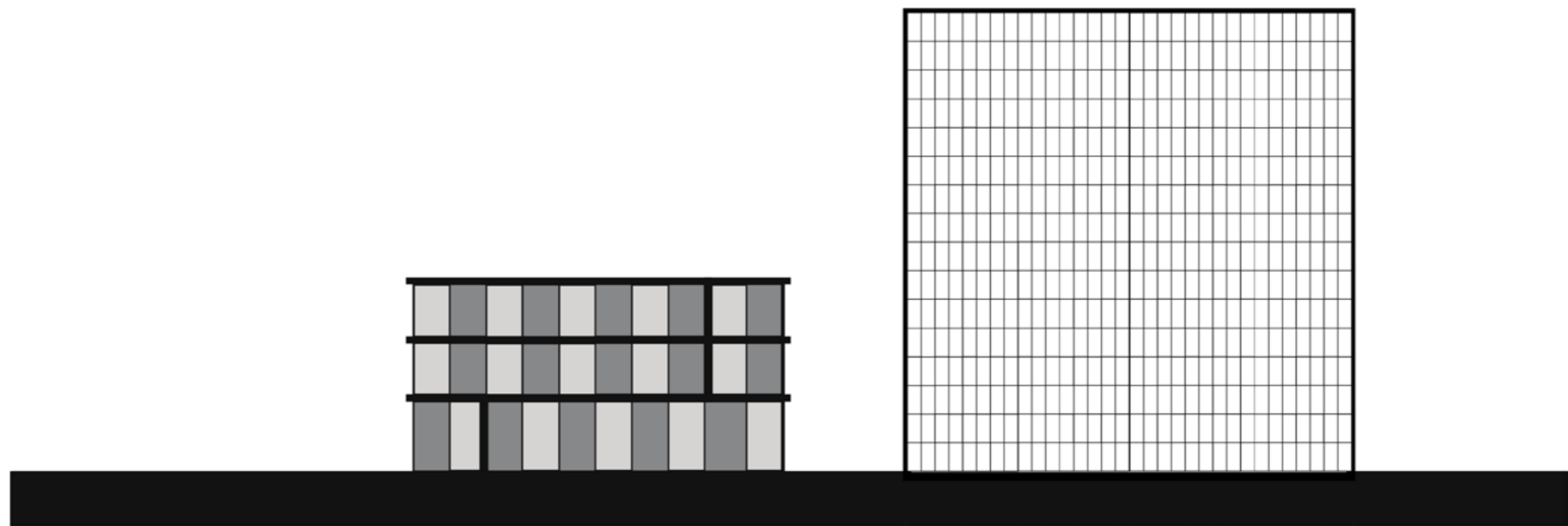
lines and planes



expression of structure

3.7 EXPRESSION/IMAGE OF THE BUILDING

TWO APPEARANCE FOR TWO VOLUMES



expression of structure
game of open and close

neutral facade grid
the use of one material

ANY QUESTIONS?