

**PROBABILITY  
USES OF PROBABILITY IN REAL  
LIFE**

# MIND MAP

**USES OF  
PROBABILITY IN  
REAL LIFE**

```
graph TD; A[USES OF PROBABILITY IN REAL LIFE] --> B[Get Started]; A --> C[EXAMPLES]
```

**Get Started**

**EXAMPLES**

## Get start

In a daily life come across the words like probably, likely, may be, chance and hope etc. All these are synonyms to probability.

### *Probability and Statistics*



# Weather

- Meteorological department predicts the weather by observing trends from the data collected over many years in the past.

## Will it Rain Woes This Year?

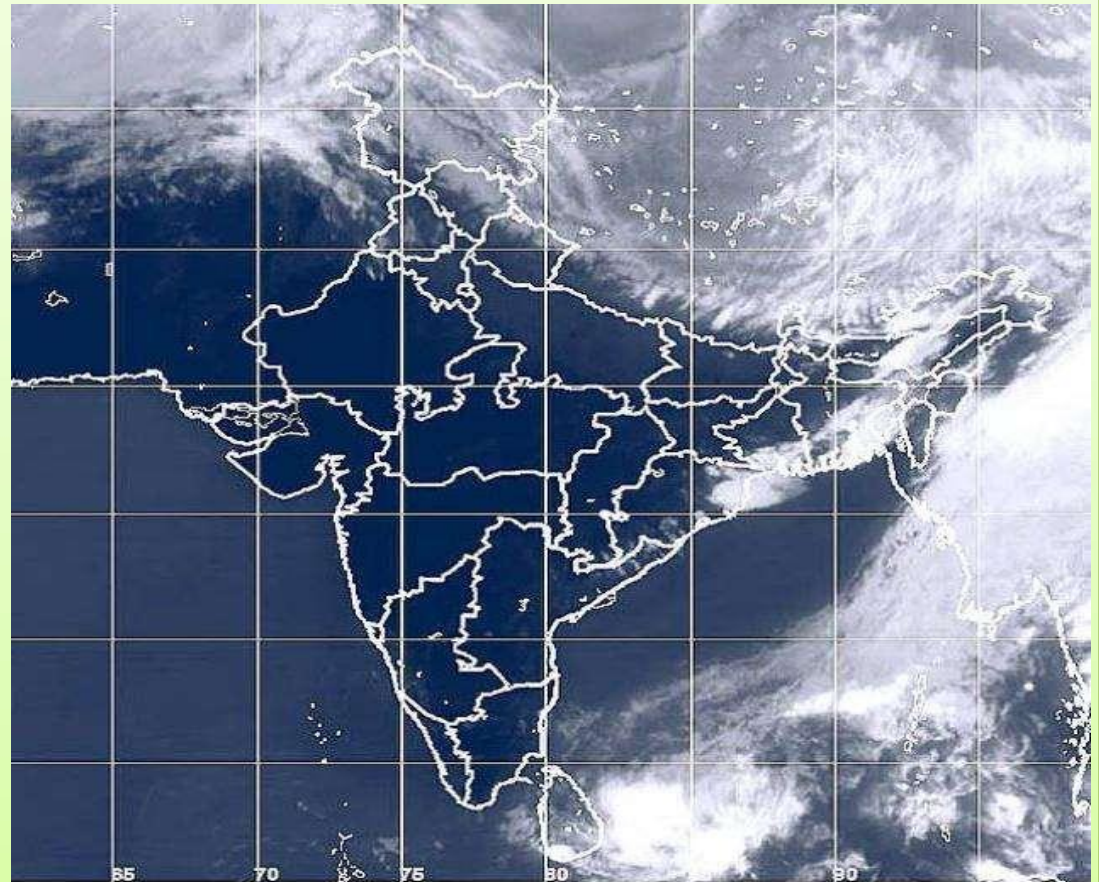
Category  
● Rainfall Range (in mm)  
● Forecast Probability (%)

EXCESS >110	1	<input type="radio"/>
ABOVE NORMAL 104-110	8	<input type="radio"/>
NORMAL 96-104	35	<input type="radio"/>
BELOW NORMAL 90-96	33	<input type="radio"/>
DEFICIENT <90	23	<input type="radio"/>



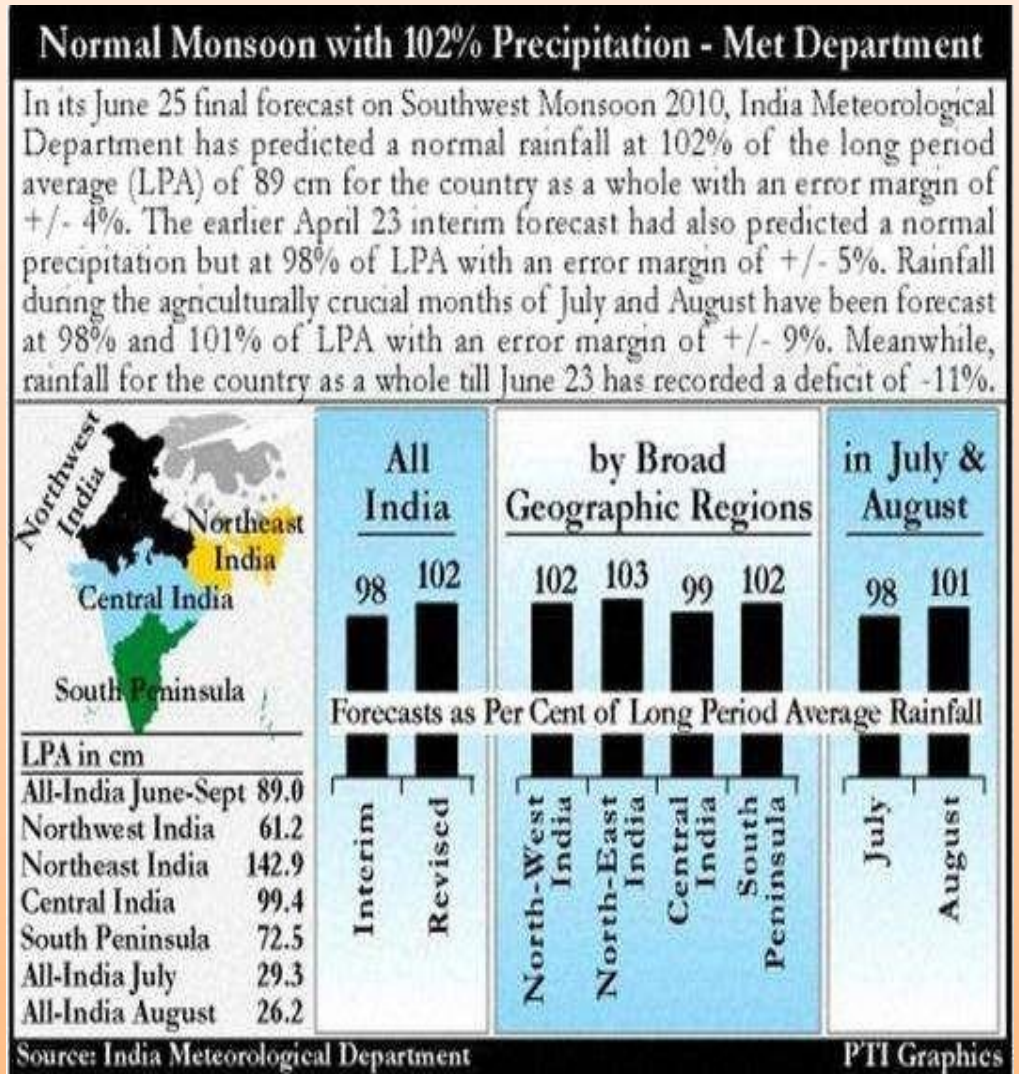
Global scientists have been issuing warnings of a likely El Niño effect this year.

Met Dept says monsoon rain likely to be 95% of long period average; warns of El Niño.



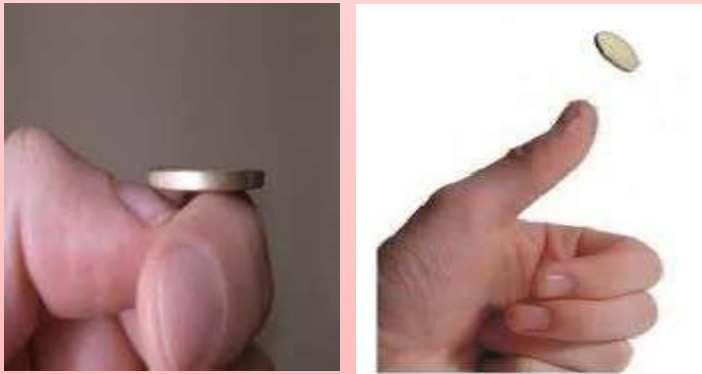
## EXAMPLE

**Weather** – when planning An outdoor activity, people Generally check the probability of rain. Meteorologists also predict The weather based on the patterns of the previous year, temperatures and natural disasters are also predicted on probability and nothing is ever stated as a surety but a possibility and an approximation.



## Sports

**Sports** – be it basketball or football and coin is tossed and both teams have 50/50 chances of winning it, a basketball player takes a free throw judging his past performance it can be determined if he will make it or not.

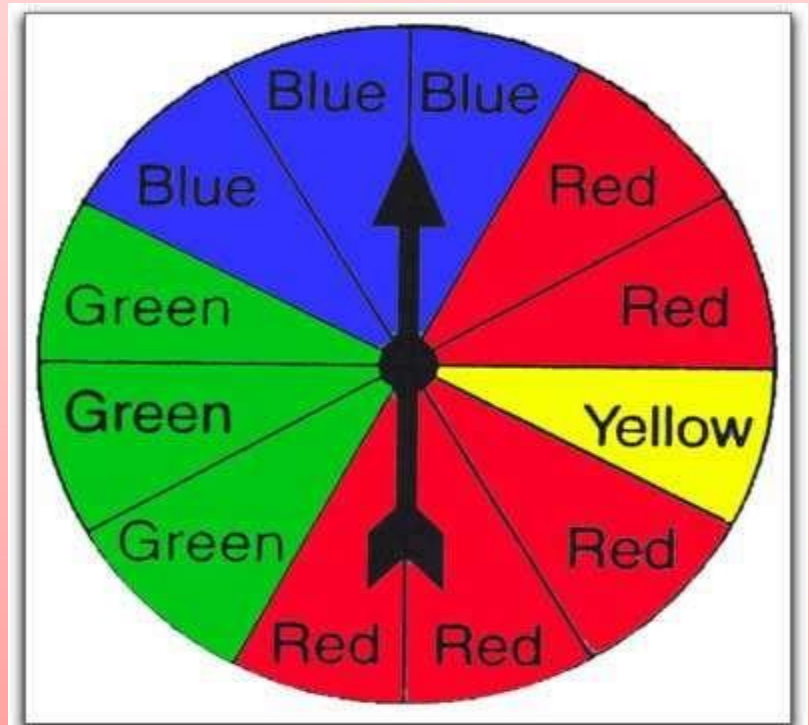


HEADS ?  
or  
TAILS ■



## Board Games

**Board Games** – a game spinner with four sections, there is a 25% chance of it landing red, since one of the 4 sections is red. Similarly the odds of rolling one die and getting an even number there is a 50% chance since three of the six numbers on a die are even.

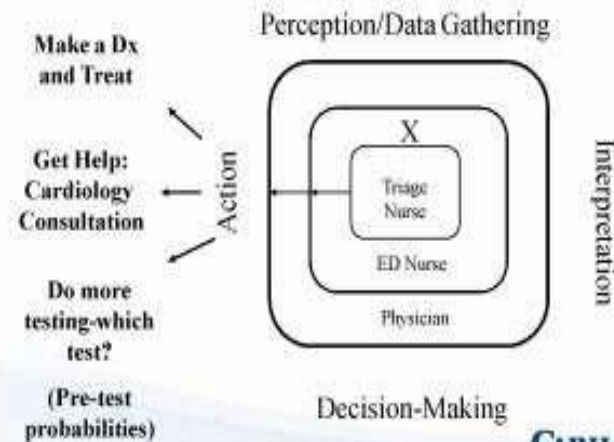


## Medical Decisions

**Medical Decisions** – When a patient is advised to undergo surgery, they often want to know the success rate of the operation which is nothing but a probability rate. Based on the same the patient takes a decision whether or not to go ahead with the same.



### Medical Decision-Making



## An exit poll

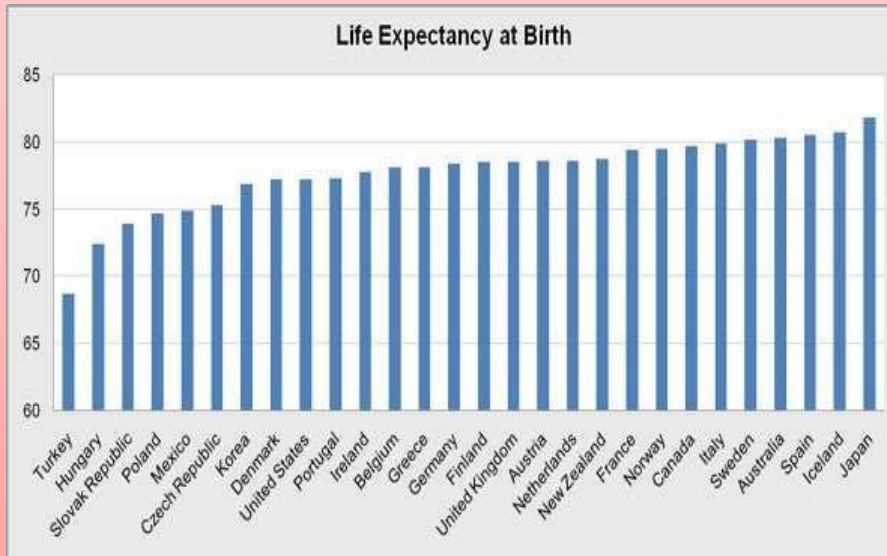
Insurance companies calculate the probability of happening of an accident or causality to determine insurance premiums.



**"An exit poll"** is taken after the election. This involves asking voted people to which party they have voted. This gives an idea of winning chances of each candidate and predictions are made accordingly.

## EXAMPLES

**Life Expectancy** – this is based on the number of years the same groups of people have lived in the past. “These ages are used as guidelines by entities such as financial advisers to help clients prepare for their retirement years.”



## SUMMARY

Even though we do not realize the use of mathematical probabilities in everyday life, subconsciously we use it in every step that we take. The use of real life probability is a huge area of research and development since it is an ever evolving field.

**“The probable is what usually happens.” - Aristotle.**

It is a simple fact that the future cannot be predicted however, mathematics can help determine its probability and how likely something might occur or not. In our daily lives we often use probability to make better decisions. But, since intuition plays a major role in human thinking, applying mathematical probability becomes a rare fact when thinking of its precise use. Thus, “The easiest definition is that probabilities are numbers between 0 and 1 which specify the chance that something happens.”