



Faculty of Applied Science
Medical Technical Radiology
Radiographic and Medical
Terminology I
(MTR109)

Lecture. 1

INTRODUCTION TO RADIOGRAPHIC MEDICAL TERMINOLOGY

Kovan Faidhalla

M.Sc. Biomedical science (Blood science)

kovan.faidhalla@tiu.edu.iq

Fall Semester

December 18 , 2025

Outline

What Is Medical Terminology?

What Is Radiographic Medical Terminology?

Importance of Medical Terminology in Radiology

Structure of Medical Terms

Common Radiographic Terms

Basic Anatomical Directions

Anatomical Planes

Clinical Example

References

Learning outcome



By the end of this session you will be able to:



- Define radiographic medical terminology



- Understand its importance



- Identify prefixes, roots, and suffixes



- Recognize common radiographic terms

What Is Medical Terminology?

- Medical terminology is the language of medicine
 - Is a science that deals with the proper use of medical terms.
 - It includes the medical words that describe or define a disease, condition or clinical signs and symptoms.
 - Refers to a special vocabulary used by medical professionals.
 - Most medical terms come from Greek and Latin

Medical Terminology



What Is Radiographic Medical Terminology?

- Specialized terminology used in radiology
- Helps describe:
 - Imaging procedures
 - Patient positioning
 - Anatomical locations
 - Radiographic techniques
- Used by:
 - Radiologic technologists
 - Radiologists
 - Doctors and nurses

Importance of Medical Terminology in Radiology

Medical
terminology
helps to:

Communicate
clearly with
healthcare staff

Understand
imaging
requests

Perform correct
patient
positioning

Reduce medical
errors

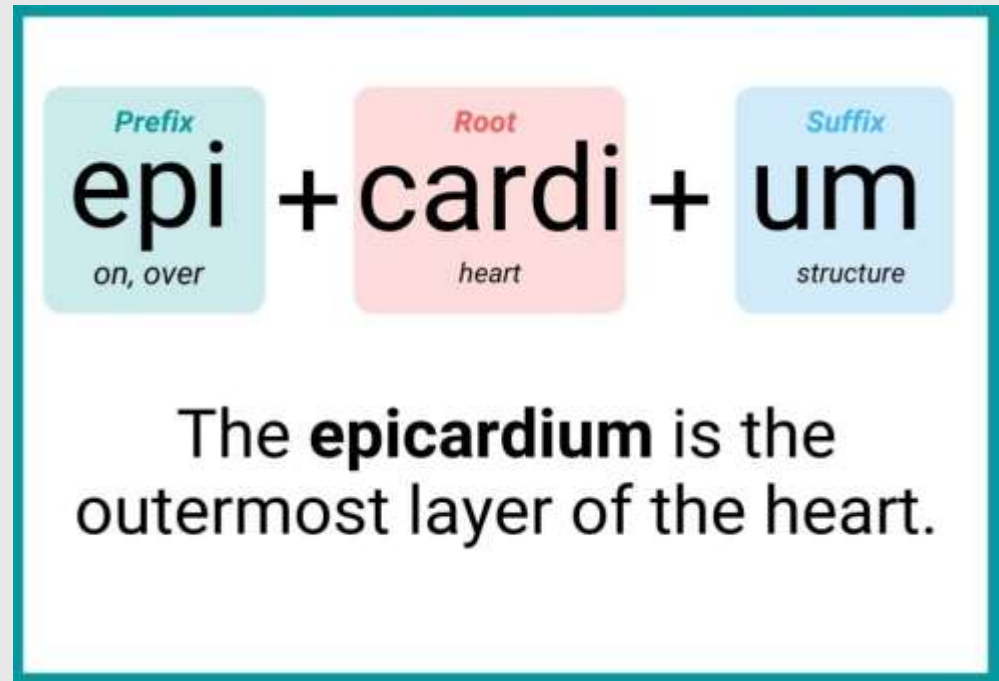
Improve patient
safety

Structure of Medical Terms

- Most medical terms have **three parts**:

1. Prefix
2. Root word
3. Suffix

- Note: all terms contain all three parts.

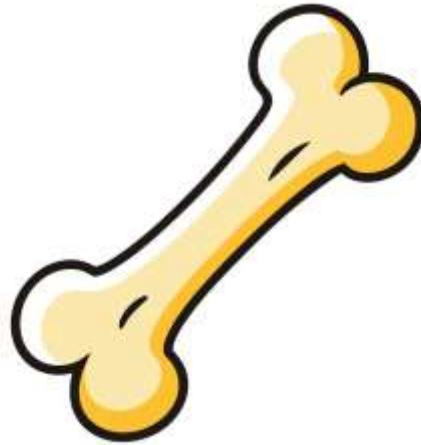
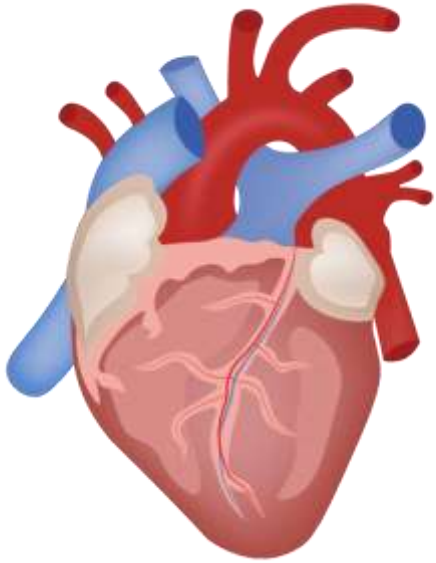




PREFIX

Comes at the beginning of the
word Changes or adds meaning

Prefix	Meaning
Hyper-	Excessive
Hypo-	Below normal
Sub-	Below
Pre-	Before



Root Word

- The **main meaning** of the term
- Usually names an organ or body part
 - **Examples:**
 - • Oste : Bone
 - • Cardi : Heart
 - • Pulmon : Lung
 - • Radi : X-ray

Suffix

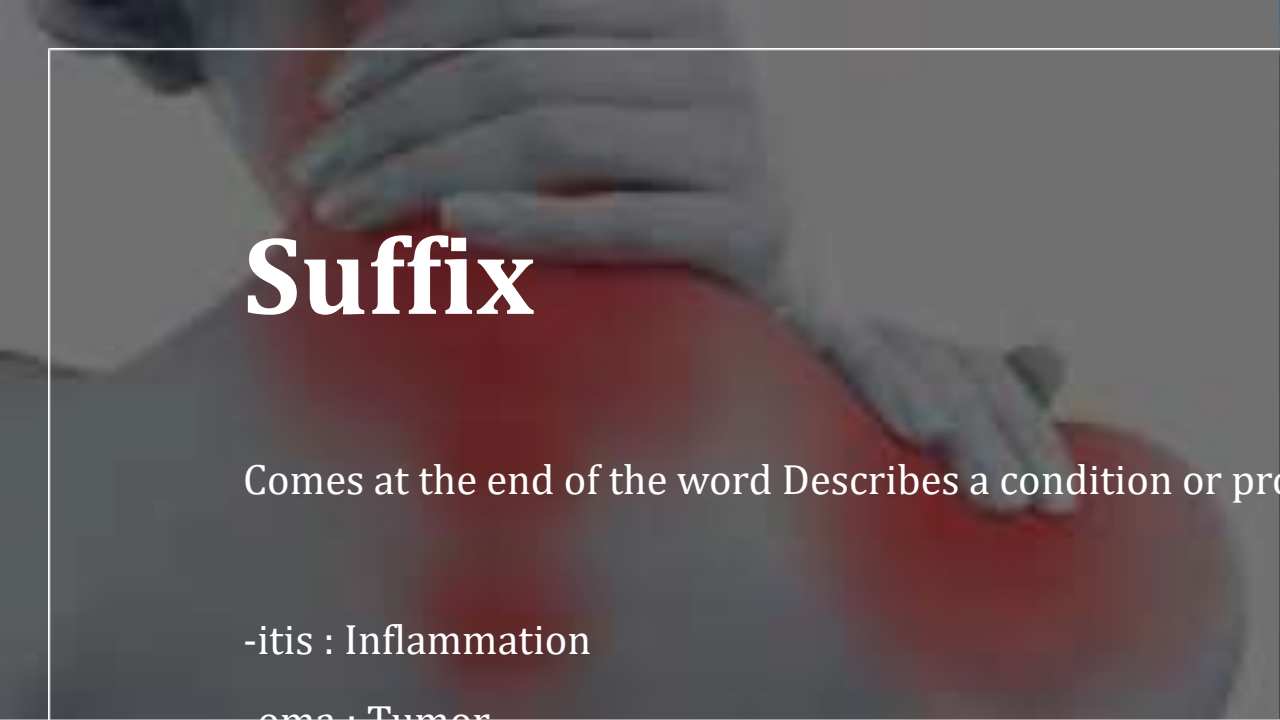
Comes at the end of the word Describes a condition or procedure

-itis : Inflammation

-oma : Tumor

-graphy : Imaging

-logy : Study of

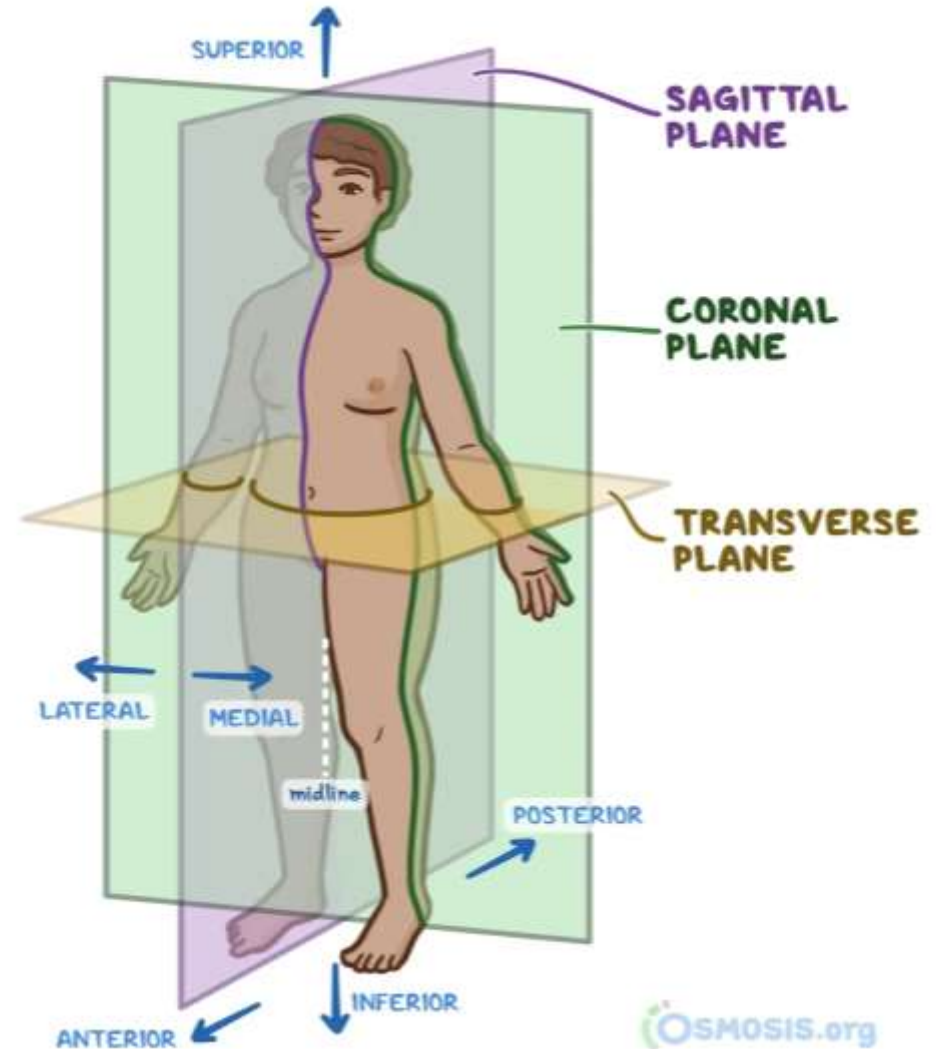


Common Radiographic Terms

- Radiology : Study of medical imaging
- Radiography: X-ray imaging
- X-ray: Type of radiation
- CT scan: Real-time imaging
- Fluoroscopy: Cross-sectional imaging

Basic Anatomical Directions

Term	Meaning
Anterior	Front
Posterior	Back
Medial	Toward midline
Lateral	Away from midline
Superior	Above
Inferior	Below

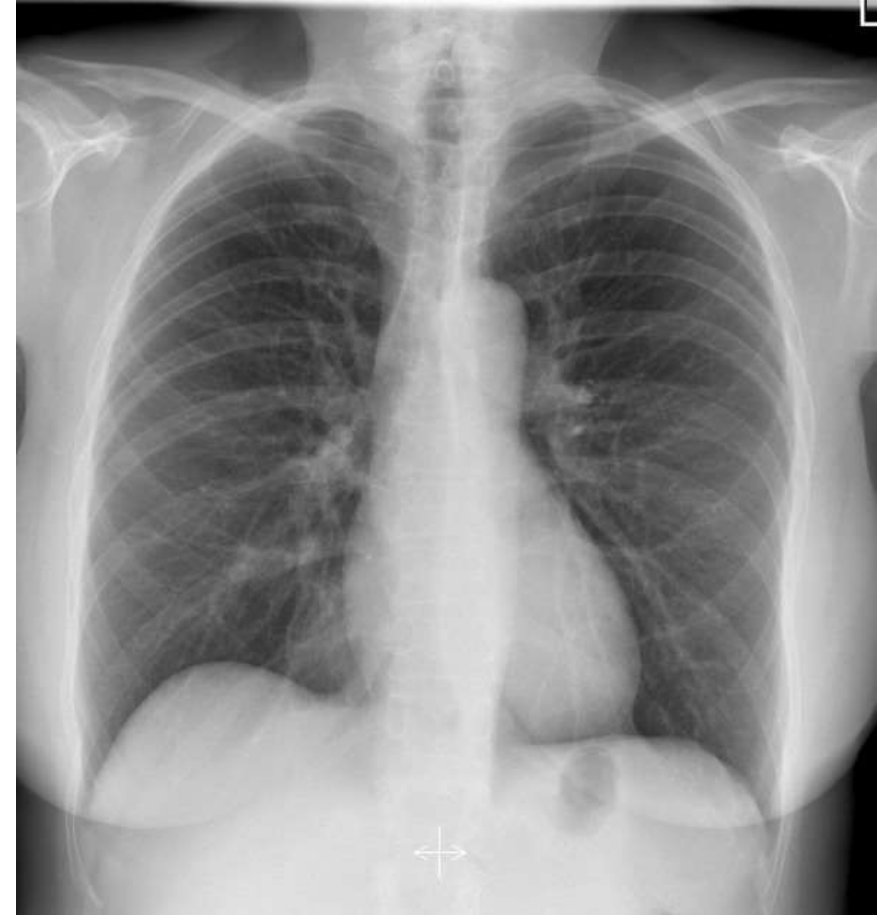


Anatomical Planes

- **Sagittal Plane**
Divides body into left and right
- **Coronal Plane**
Divides body into front and back
- **Transverse Plane**
Divides body into upper and lower

Clinical Example

- **Chest X-ray – PA view**
- Chest → Body part
- X-ray → Imaging method
- PA → Posteroanterior position



References

- Bontrager, K. L., & Lampignano, J. P. (2020). *Textbook of Radiographic Positioning and Related Anatomy*. Elsevier.
- Ehrlich, R. A., & Daly, J. A. (2021). *Patient Care in Radiography*. Elsevier.