

Tishk International University  
Faculty of Applied Science  
Nutrition and Dietetics Department



# Skeletal System

---

Human Anatomy / 2<sup>nd</sup> Lab  
1<sup>st</sup> Grade / Spring Semester

Instructor: Adam Jalal Mohammed

Email: [adam.jalal@tiu.edu.iq](mailto:adam.jalal@tiu.edu.iq)



# Types of Bones

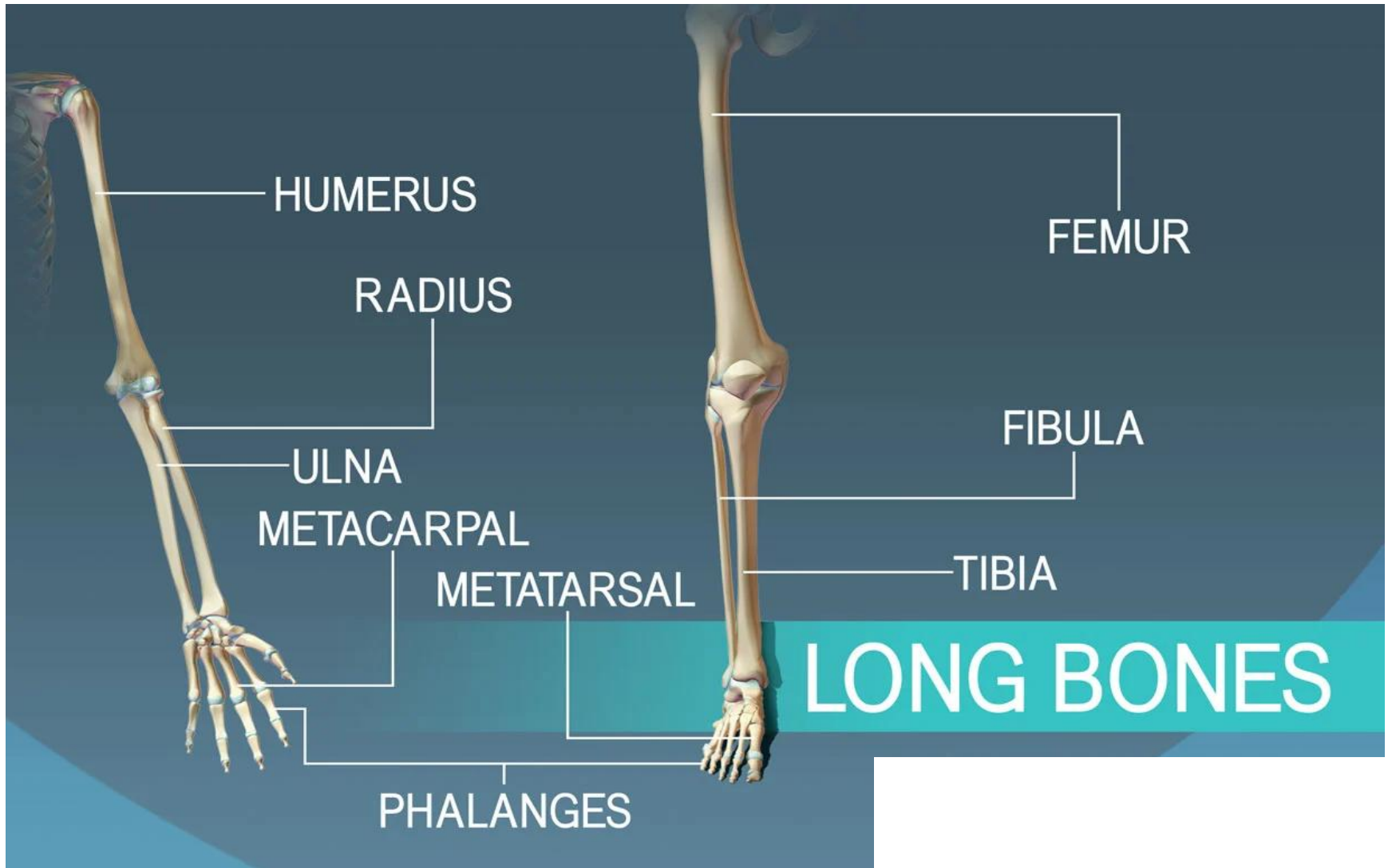
- 1. Long bone**
- 2. Short bone**
- 3. Flat bone**
- 4. Irregular bone**
- 5. Sesamoid bone**

# Long Bones

**Location** : Found in the **limbs**

**Function**: They **facilitate movement**, **provide protection to internal organs**, and are important for **blood cell formation and nutrient storage**.

# Long Bones

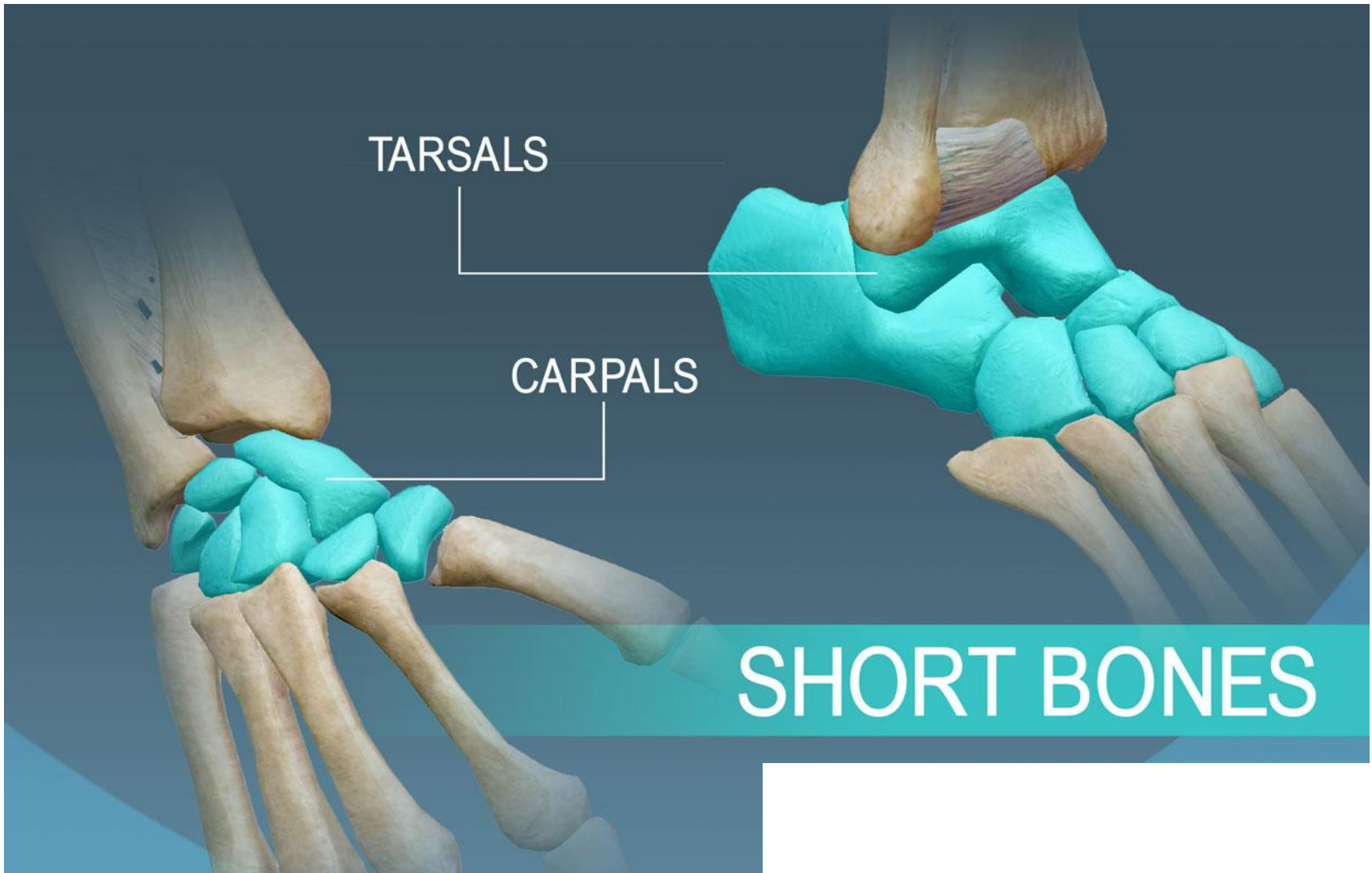


# Short Bones

**Location:** wrist and ankle joints

**Function:** short bones provide  
**stability and some movement.**

# Short Bones

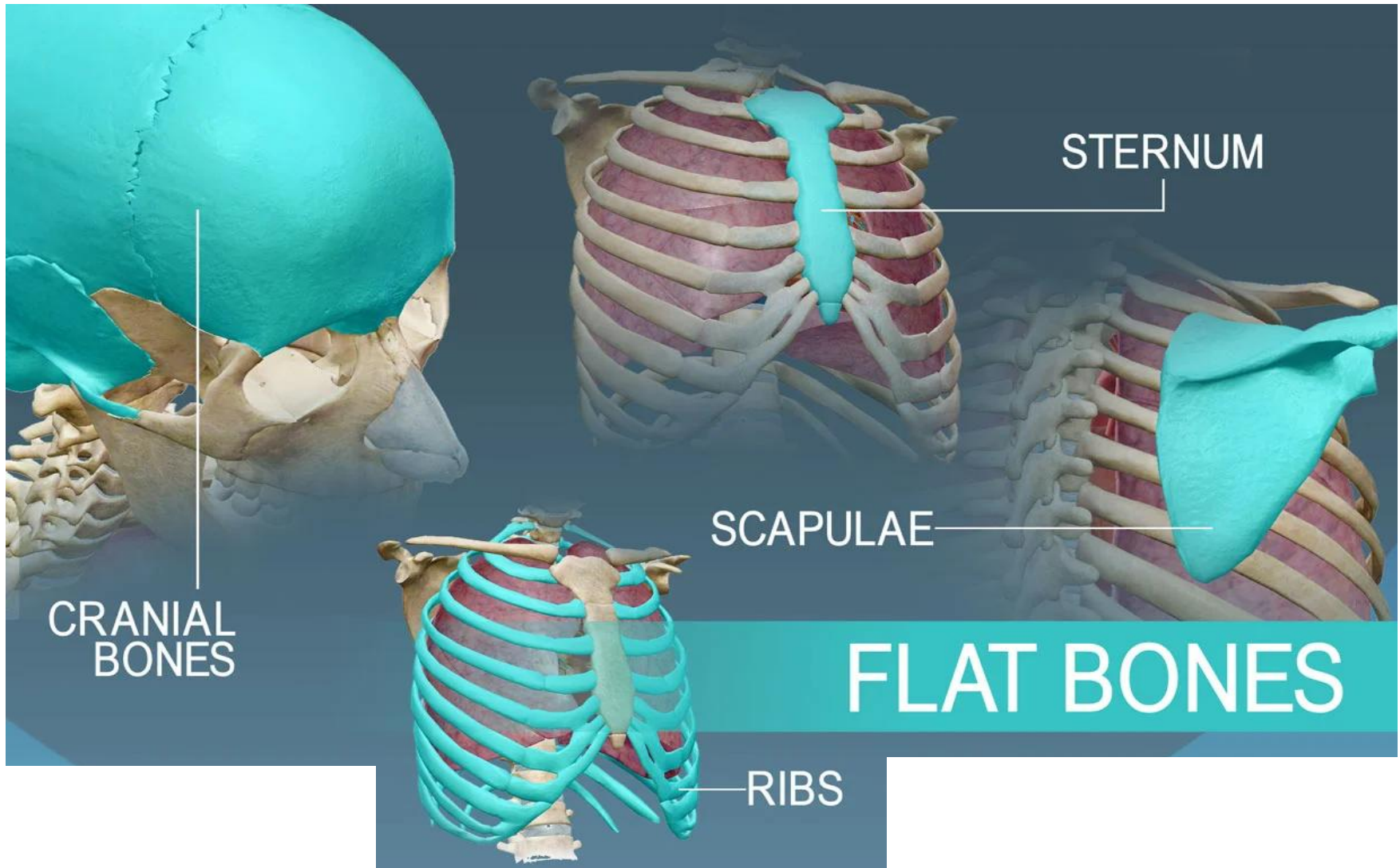


# Flat Bones

**Location:** Skull, sternum, ribs and scapula

**Function:** The function of flat bones is to protect internal organs such as the brain, heart, and pelvic organs

# Flat Bones

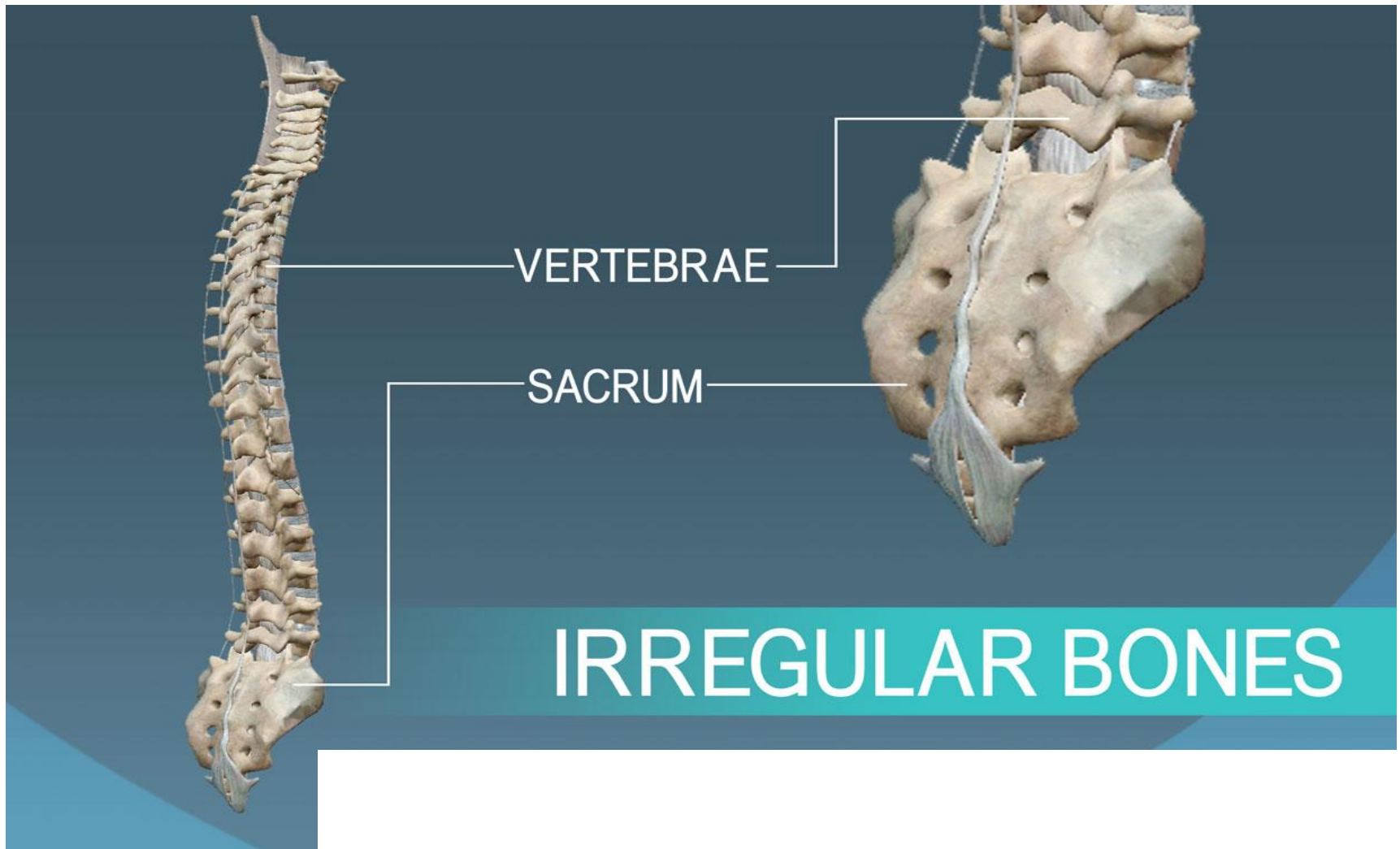


# Irregular Bones

**Location:** vertebrae; sphenoid; hyoid

**Function:** the function of irregular bones is to protect various parts of your body

# Irregular Bones

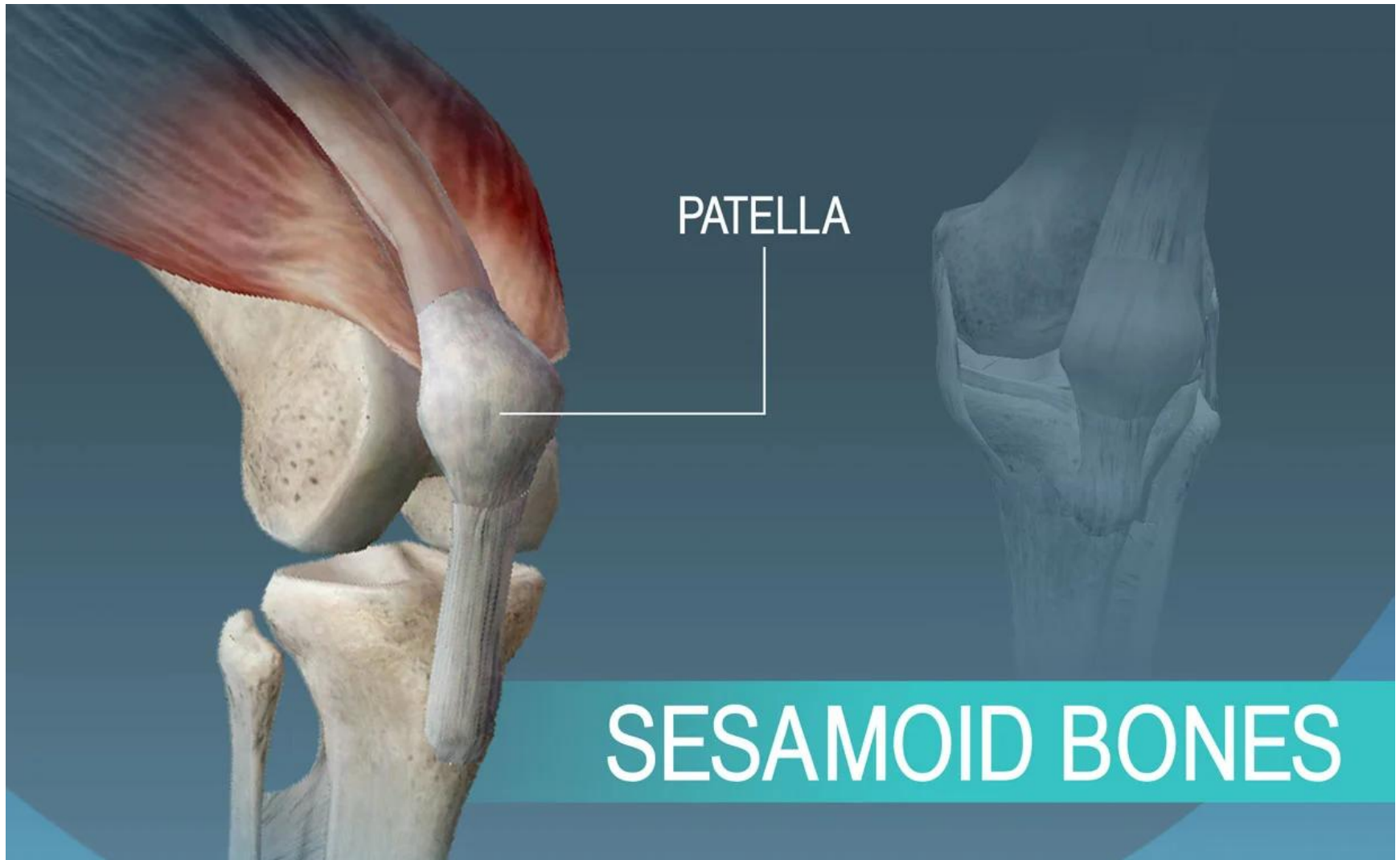


# Sesamoid (Round) Bones

**Location:** patella (knee cap)

**Function:** Aids with knee extension, allows for smooth movement during knee flexion/extension, protects the anterior surface of the knee joint

# Sesamoid (Round) Bones



# Divisions of the Skeletal System

- 1. Axial Skeleton** : The axial skeleton provides support and protection for the brain, spinal cord.
- 2. Appendicular Skeleton** : The appendicular skeleton supports the attachment and functions of the upper and lower limbs of the human body

# Divisions of the Skeletal System

Appendicular Skeleton



Axial Skeleton



