



Faculty of Applied Science

Assist Prof. Dr. Sangar M. AHMED

E. mail: sangar.ahmed@tiu.edu.iq

@Dr.Sangarjaff

Skeletal System

Lab.

Human Anatomy

Fall Semester

Week 3

Types of Bones

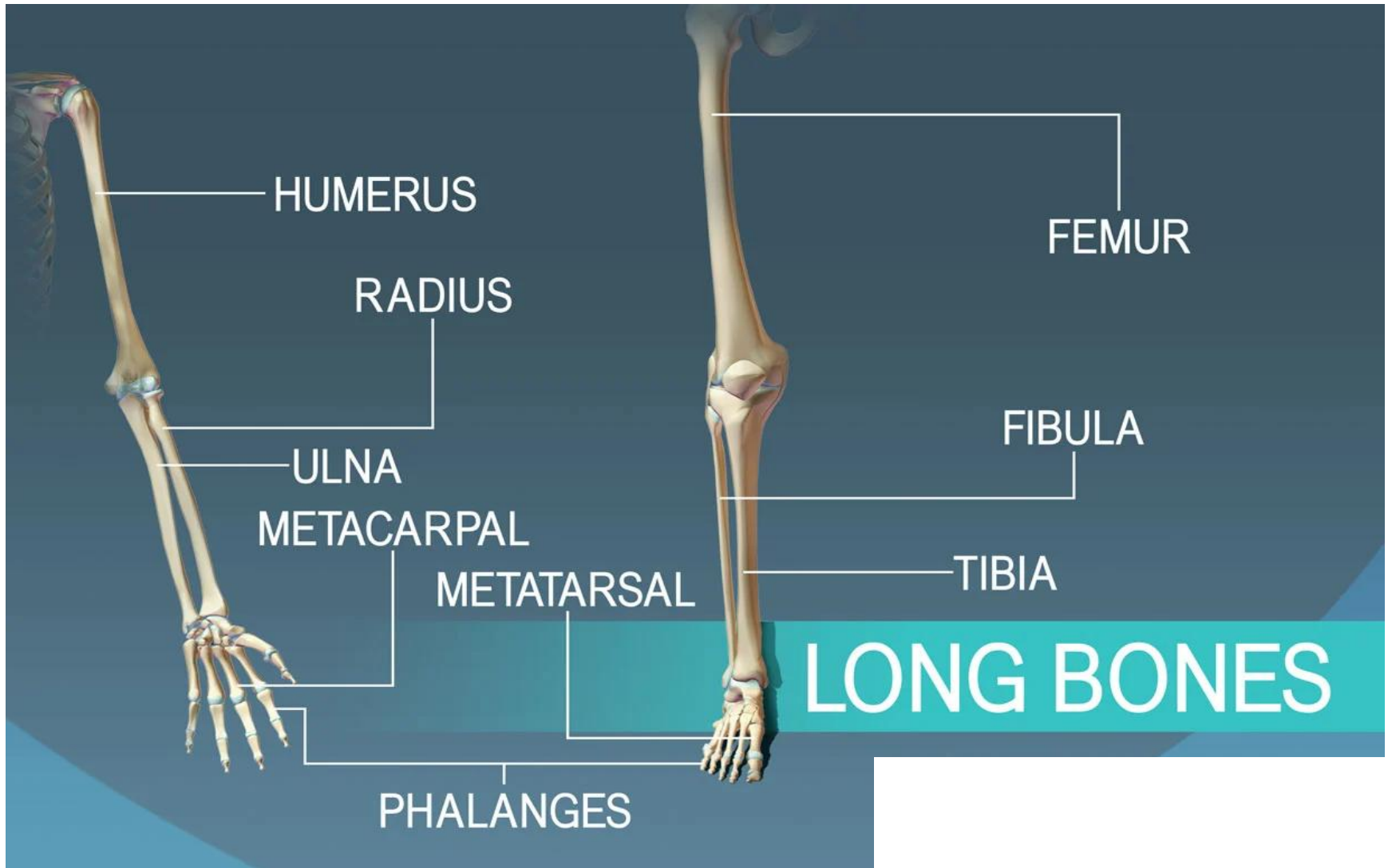
- 1. Long bone**
- 2. Short bone**
- 3. Flat bone**
- 4. Irregular bone**
- 5. Sesamoid bone**

Long Bones

Location : Found in the **limbs**

Function: They **facilitate movement**, **provide protection to internal organs**, and are important for **blood cell formation and nutrient storage**.

Long Bones

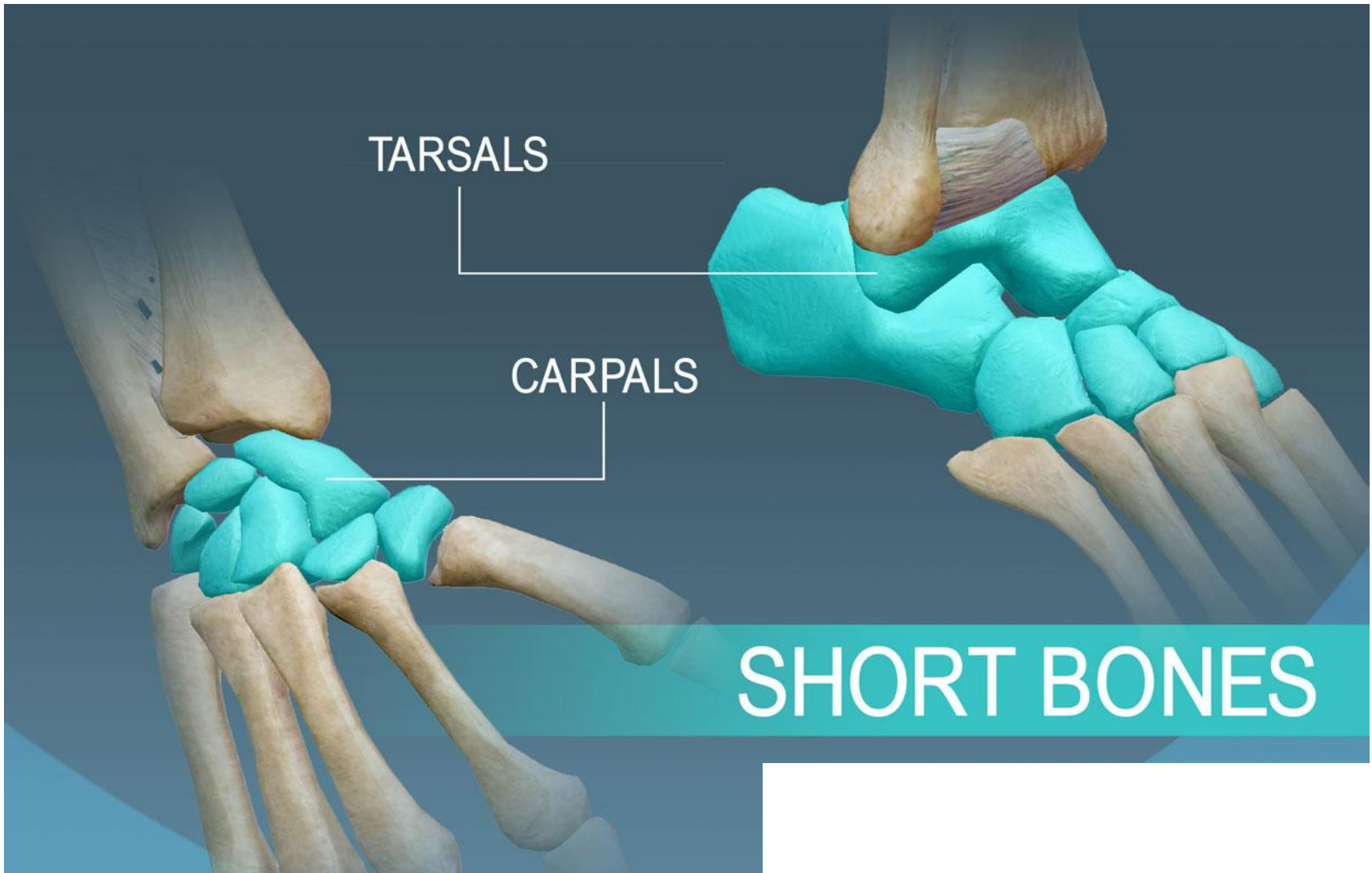


Short Bones

Location: wrist and ankle joints

Function: short bones provide
stability and some movement.

Short Bones

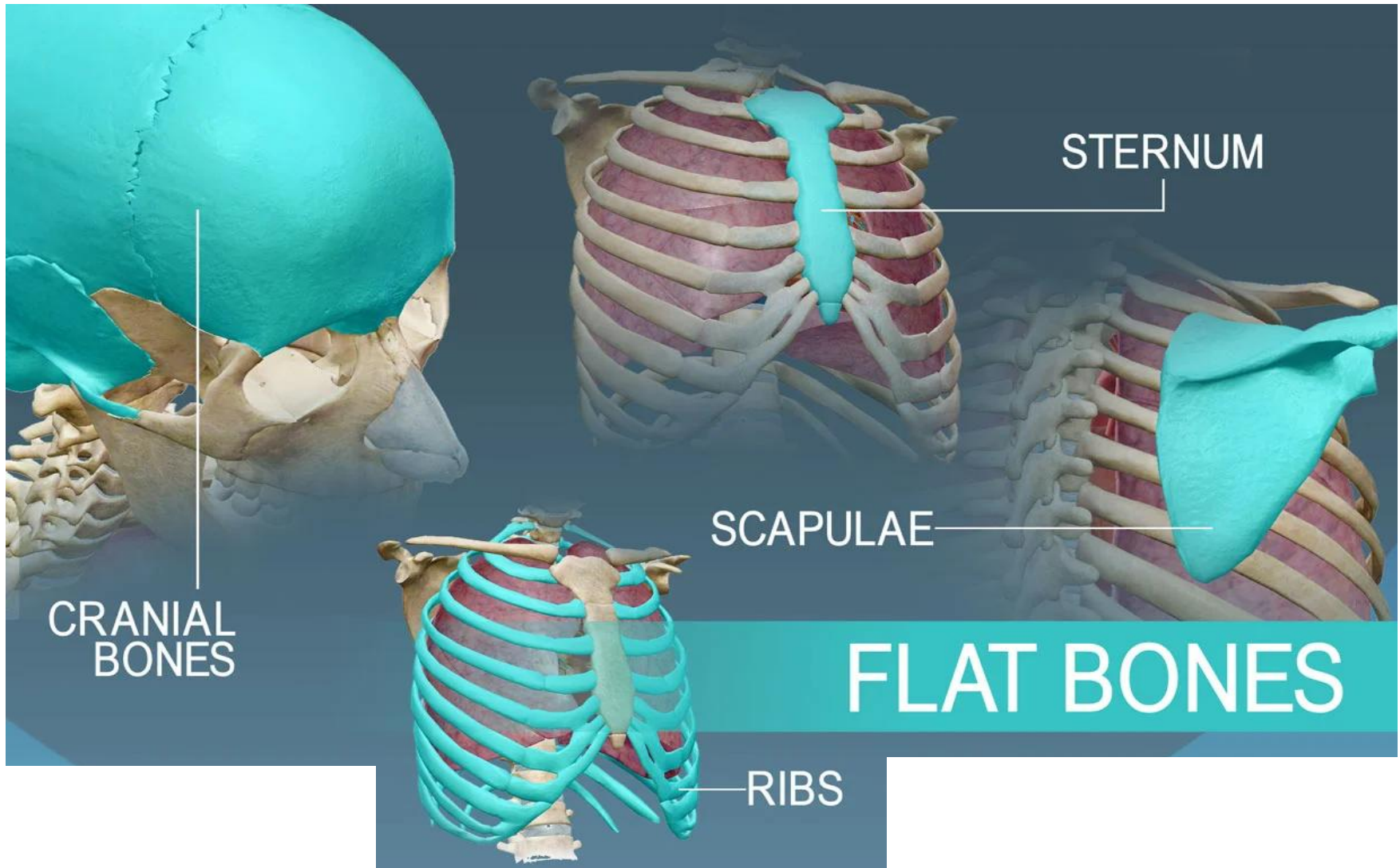


Flat Bones

Location: Skull, sternum, ribs and scapula

Function: The function of flat bones is to protect internal organs such as the brain, heart, and pelvic organs

Flat Bones

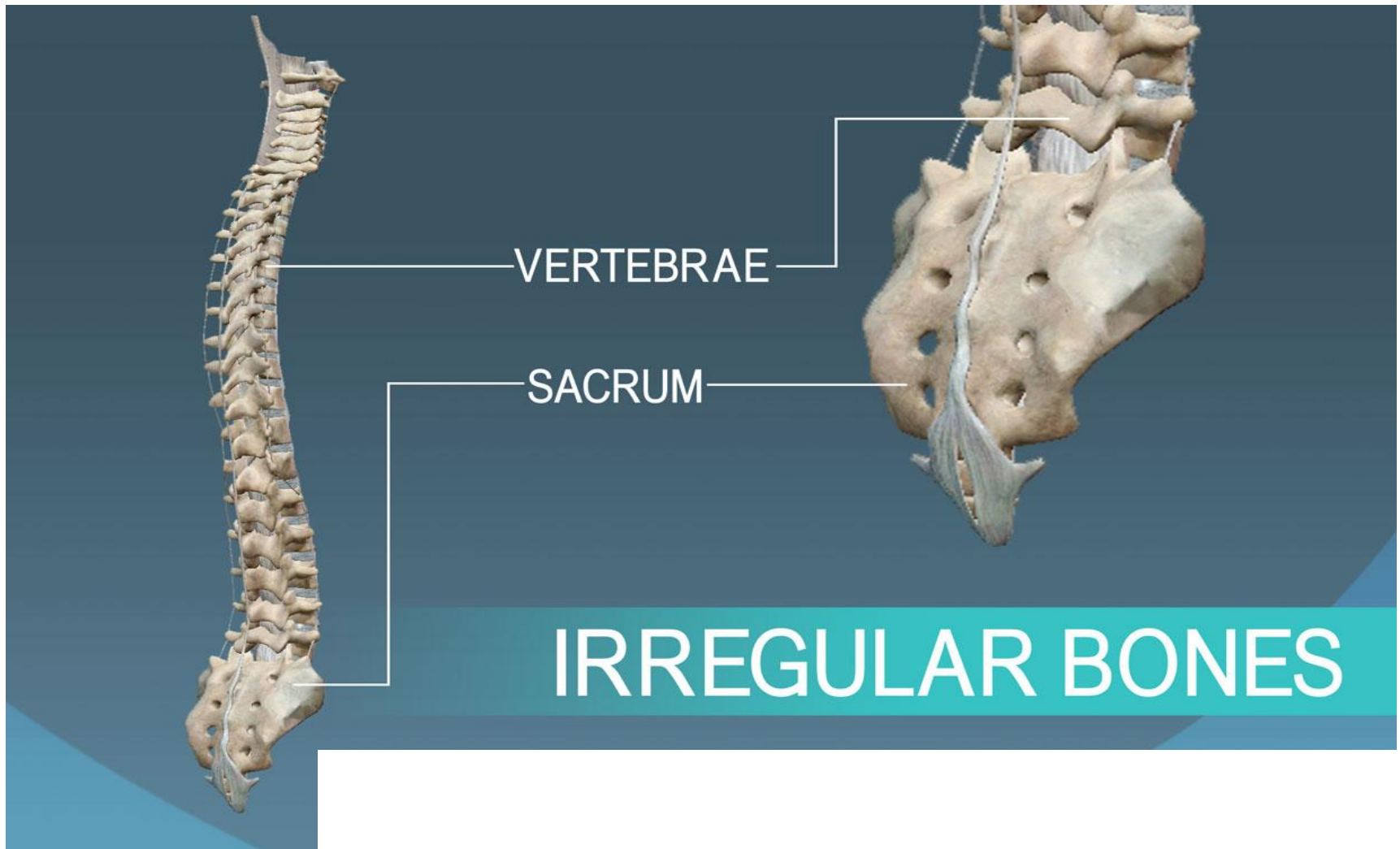


Irregular Bones

Location: vertebrae; sphenoid; hyoid

Function: the function of irregular bones is to protect various parts of your body

Irregular Bones

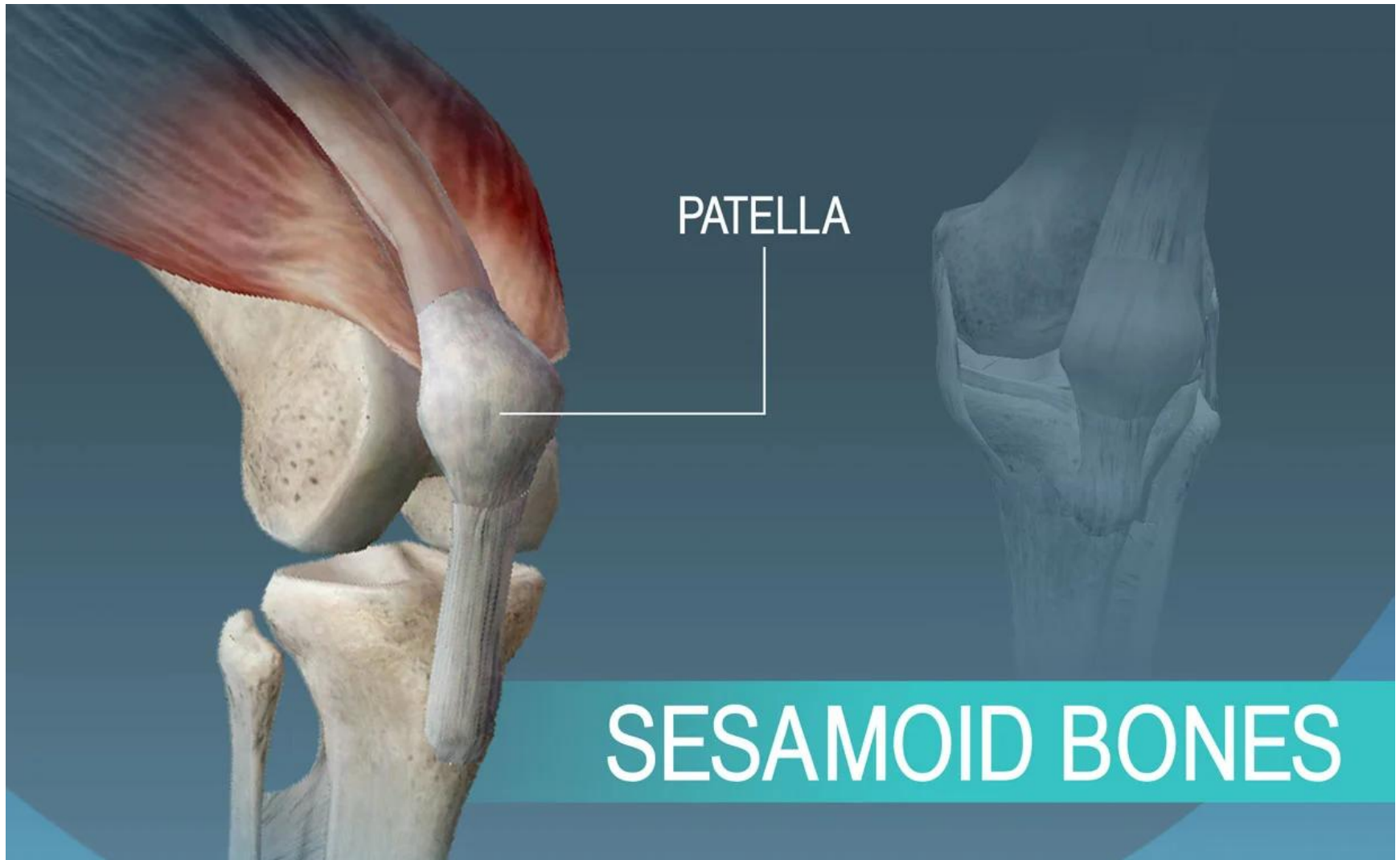


Sesamoid (Round) Bones

Location: patella (knee cap)

Function: Aids with knee extension, allows for smooth movement during knee flexion/extension, protects the anterior surface of the knee joint

Sesamoid (Round) Bones



Divisions of the Skeletal System

- 1. Axial Skeleton** : The axial skeleton provides support and protection for the brain, spinal cord.
- 2. Appendicular Skeleton** : The appendicular skeleton supports the attachment and functions of the upper and lower limbs of the human body

Divisions of the Skeletal System

Appendicular Skeleton



Axial Skeleton



